



# FOUNDERS DAY COMMISSION MEETING

City of Dripping Springs

Council Chambers, 511 Mercer St, Dripping Springs, TX

Monday, October 23, 2023 at 6:30 PM

## Agenda

### CALL TO ORDER AND ROLL CALL

#### Commission Members

Brenda Medcalf, Chair  
Jake Adams, Vice Chair  
Susan Warwick, Secretary  
Brian Daniel  
Darrell Debish  
Lisa Garza  
Sharon Goss  
Clinton Holtzendorf  
Dee Marsh  
Michael Monaghan  
Jeff Shindler  
Brad Thomas  
Brian Varnell

#### Staff, Consultants & Elected/Appointed Officials

Parks & Community Services Director Andy Binz  
Community Events Coordinator Johnna Krantz  
Council Member Sherrie Parks

### PRESENTATION OF CITIZENS

*A member of the public who desires to address the Commission regarding any item on an agenda for an open meeting may do so at presentation of citizens before an item or at a public hearing for an item during the Commission's consideration of that item. Citizens wishing to discuss matters not contained within the current agenda may do so, but only during the time allotted for presentation of citizens. Speakers are allowed two (2) minutes to speak during presentation of citizens or during each public hearing. Speakers may not cede or pool time. Members of the public requiring assistance of a translator will be given twice the amount of time as a member of the public who does not require the assistance of a translator to address the Board. It is the request of the Board that members of the public wishing to speak on item(s) on the agenda with a noticed Public Hearing hold their comments until the item(s) are presented for consideration. Speaker are encouraged to sign in. Anyone may request a copy of the City's policy on presentation of citizens for the City Secretary. By law no action may be taken during Presentation of Citizens.*

## MINUTES

- 1. Discuss and consider approval of the September 11, 2023, Founders Day Commission regular meeting minutes.**

## BUSINESS

- 2. Discuss and consider possible action regarding the 2024 Founders Day Event site plan.**
- 3. Discuss and consider possible action regarding Appointment recommendation for At-Large Commissioners with terms expiring June 30, 2023.**
- 4. Discuss and consider approval of a recommendation regarding Amendments to the Founders Day Commission annual meeting schedule.**
- 5. Discuss and consider approval of the 2024 Founders Day Commission meeting calendar.**

## STANDING COMMITTEE REPORTS

*The following reports relate to the administration and planning of the Founders Day Festival. The Commission may provide staff direction; however, no action may be taken.*

- 6. Arts & Crafts Committee**  
*Commissioner Monaghan*
- 7. Carnival & Food Committee**  
*Commissioners Goss and Warwick*
- 8. Entertainment Committee**  
*Commissioners Thomas, Daniel and Holtzendorf*
- 9. Parade Committee**  
*Commissioners Medcalf and Holtzendorf*
- 10. Publicity Committee**  
*Commissioners Adams, Holtzendorf, Daniel, Marsh and Lisa Sullivan*
- 11. Sanitation Committee**  
*Commissioners Holtzendorf (Chair), Debish, and Shindler*
- 12. Security Committee**  
*Commissioners Medcalf and Debish*
- 13. Site Plan Committee**  
*Commissioners Monaghan, Shindler and Medcalf*
- 14. Sponsorship & Underwriting Committee**  
*Commissioners Adams, Debish, Daniel and Marsh*
- 15. Traffic & Parking Committee**  
*Commissioners Medcalf and Debish*

**16. Volunteer Committee**

*Community Events Coordinator Johnna Krantz*

**17. Budget Committee Report**

*Commissioner Medcalf (Chair) and Garza, and Community Events Coordinator Johnna Krantz*

**UPCOMING MEETINGS**

**Founders Day Commission Meetings**

November 13, 2023, at 6:30 p.m.

December 11, 2023, at 6:30 p.m.

**City Council Meetings**

November 7, 2023, at 6:00 p.m. (CC & BOA)

November 21, 2023, at 6:00 p.m. (CC)

December 5, 2023, at 6:00 p.m. (CC & BOA)

December 19, 2023, at 6:00 p.m. (CC)

**ADJOURN**

**TEXAS OPEN MEETINGS ACT PUBLIC NOTIFICATION & POSTING OF MEETING**

*All agenda items listed above are eligible for discussion and action unless otherwise specifically noted. This notice of meeting is posted in accordance with Chapter 551, Government Code, Vernon's Texas Codes. Annotated. In addition, the Commission may consider a vote to excuse the absence of any Commissioner for absence from this meeting.*

*I certify that this notice of meeting was posted at the City of Dripping Springs City Hall and website, [www.cityofdrippingsprings.com](http://www.cityofdrippingsprings.com), on **October 20, 2023, at 3:00 p.m.***

---

*City Secretary*

*This facility is wheelchair accessible. Accessible parking spaces are available. Requests for auxiliary aids and services must be made 48 hours prior to this meeting by calling (512) 858-4725.*



# FOUNDERS DAY COMMISSION MEETING

## City of Dripping Springs

Council Chambers, 511 Mercer St, Dripping Springs, TX  
Monday, September 11, 2023 at 6:30 PM

## MINUTES

### CALL TO ORDER AND ROLL CALL

With a quorum of the Commission present, Community Events Coordinator Krantz called the meeting to order at 6:31 pm.

**Commission Members present were:**

Susan Warwick, Secretary  
Brian Daniel  
Darrell Debish  
Lisa Garza  
Sharon Goss  
Clinton Holtzendorf  
Michael Monaghan  
Jeff Shindler  
Brian Varnell

**Commission Members absent were:**

Brenda Medcalf, Chair  
Jake Adams, Vice Chair  
Brad Thomas

**Staff, Consultants & Appointed/Elected Officials present were:**

Parks & Community Services Director Andy Binz  
Community Events Coordinator Johnna Krantz  
Content Marketing Specialist Stephanie Hartnett  
Council Member Sherrie Parks

A motion was made by Commissioner Debish to excuse tonight's absences of Commissioners Metcalf, Adams and Thomas. Commissioner Holtzendorf seconded the motion which carried unanimously 9 to 0.

### PRESENTATION OF CITIZENS

*A member of the public who desires to address the Commission regarding any item on an agenda for an open meeting may do so at presentation of citizens before an item or at a public hearing for an item during the Commission's consideration of that item. Citizens wishing to discuss matters not contained within the current agenda may do so, but only during the time allotted for presentation of citizens. Speakers are allowed two (2) minutes to speak during presentation of citizens or during each public hearing. Speakers may not cede or pool time. Members of the public requiring assistance of a translator will be given twice the amount of time as a member of the public who does not require the assistance of a translator to address*

*the Board. It is the request of the Board that members of the public wishing to speak on item(s) on the agenda with a noticed Public Hearing hold their comments until the item(s) are presented for consideration. Speaker are encouraged to sign in. Anyone may request a copy of the City's policy on presentation of citizens for the City Secretary. By law no action may be taken during Presentation of Citizens.*

No citizens spoke during the Presentation of Citizens

## MINUTES

1. **Discuss and consider approval of the June 12, 2023, Founders Day Commission regular meeting minutes.**

A motion was made by Commissioner Debish to approve the June 12, 2023, Founders Day Commission regular meeting minutes. Commissioner Monaghan seconded the motion which carried unanimously 9 to 0.

## BUSINESS

2. **Discuss and consider possible action regarding Appointment recommendation for At-Large Commissioners with terms expiring June 30, 2023.**

A motion to postpone this item until applicants have been interviewed was made by Commissioner Debish. Commissioner Monaghan seconded the motion which carried unanimously 9 to 0.

3. **Discuss and consider possible action regarding Founders Day Commission Committees.**

The Sanitation committee will be chaired by Commissioner Holtzendorf. Commissioners Debish and Shindler will also be members of the Sanitation Committee.

A Budget Committee will be formed. This committee will be chaired by Commissioner Metcalf. Commissioner Garza and Events Coordinator Krantz will also be members of the Budget Committee.

4. **Discuss and consider possible action regarding meeting frequency.**

A motion was made by Commissioner Monaghan that the entire commission will meet a minimum of once a quarter. Commissioner Shindler seconded the motion which carried unanimously 9 to 0.

5. **Discuss and consider possible action regarding amendments to the Fiscal Year 2024 Founders Day Commission preliminary budget recommendation.**

This item was discussed. No action was taken.

6. **Discuss and consider possible action regarding the 2024 Founders Day Event site plan.**

The Commission would like to secure the Roxie parking lot. Discussion included Emergency Management headquarters, CERT, Fire and EMS which can be stationed in this parking lot.

A cooling area with tent, table and chairs, and a portable toilet can be placed here as well. UTVs can be located here to be accessed by EMS and Fire. It could also serve as a food vendor support area. No vendors would be located in the parking lot. The Site Plan committee will discuss plans for the parking lot and report to the Commission.

No action was taken.

**7. Discuss and consider approval of a reschedule date for the October 2, 2023, Founders Day Commission regular meeting.**

A motion was made by Commissioner Debish to reschedule the October 2, 2023, to October 23, 2023. Commissioner Daniel seconded the motion which carried unanimously 9 to 0.

## UPCOMING MEETINGS

### *Founders Day Commission Meetings*

October 23, 2023, at 6:30 p.m.

November 13, 2023, at 6:30 p.m.

December 11, 2023, at 6:30 p.m.

### *City Council Meetings*

September 19, 2023, at 6:00 p.m.

October 3, 2023, at 6:00 p.m.

October 17, 2023, at 6:00 p.m.

## ADJOURN

A motion was made by Commissioner Daniel to adjourn the meeting. Commissioner Holtzendorf seconded the motion which carried unanimously 9 to 0.

This regular meeting of the Founders Day Commission was adjourned at 7:13 pm.

*Susan Warwick*

---

Susan Warwick, Secretary  
Founders Day Commission



**STAFF REPORT**  
**City of Dripping Springs**  
**PO Box 384**  
**511 Mercer Street**  
**Dripping Springs, TX 78620**

**Submitted By:** Johnna Krantz, Community Events Coordinator

**Founders Day  
Commission Meeting  
Date:** October 23, 2023

**Agenda Item Wording:** Discuss developing a "Plan B" layout for parade staging and traffic flow pattern around the DSISD Admin Building in the event that it is also used as an early voting polling location during the May 2024 election cycle.

**Agenda Item Requestor:** Johnna Krantz, Community Events Coordinator

**Summary/Background:** The DSISD Admin Building will be considered as a possible polling location for the May 2024 election cycle. Early voting would take place concurrently with the Founders Day Festival. We will not have confirmation of the polling location until about February of 2024. It would be helpful to have a back-up plan ready if this is the case. Elections could effect the following:

- Parade Route
- Carnival location
- The 2024 Traffic Control Plan

**Commission  
Recommendations:**

**Recommended  
Council Actions:**

**Attachments:** 2023 Traffic Control Plan, Signed (2.28.2023)

**Next Steps/Schedule:** Develop a secondary plan in case May elections take place at DSISD Admin Building in 2024.




---

## 2023 TRAFFIC CONTROL, SAFETY AND SECURITY PLAN

### DRIPPING SPRINGS, TEXAS

### APRIL 28-30, 2023

---

#### SCOPE:

This Traffic Control Plan (TCP) has been prepared to promote safety and convenience. The City will temporarily close Mercer Street during the annual Founders Day celebration April 28-30, 2023. Other City streets will also be temporarily closed during the celebration and this TCP includes those streets as well (Location Map attached).

This plan is based on the City's prior successful experience with traffic control during the Founders Day celebration in addition to making suggested revisions at the recommendation of the Department of Homeland Security. The celebration includes vendors and booths, a parade through the downtown area, and carnival rides. The closure of Mercer and other downtown streets allows for the parade and for attendees to move safely and visit booths.

In addition to this TCP, a traffic enforcement plan will also be implemented with the support of the Hays County Sheriff's office. Officers are to be placed at Sports Park Drive and Mighty Tiger to clear traffic during closure - one is to be available if needed for RR 12 signal. The TCP will not be implemented prior to 24 hours before the event. The TCP components will be removed, and streets will be reopened no later than 24 hours after the event.

#### TEMPORARY ROAD CLOSURES (LAYOUT ATTACHED):

West Mercer from Bluff to US 290 (closed to thru traffic 5PM on Thursday)  
 West Mercer from Bluff to RR12 (closed 12 Noon on Friday)  
 Old Fitzhugh from RR12 to Mercer (closed to thru traffic 12 Noon on Friday)  
 Wallace from San Marcos to Bluff (closed 6 AM on Friday)  
 Wallace from RR12 to San Marcos (closed 12 Noon Friday)  
 Bluff, College, and San Marcos from US 290 to Mercer (closed 12 Noon Friday)

#### TEMPORARY LANE CLOSURE FOR PARADE (LAYOUT ATTACHED):

Westbound lane closure of US 290 from San Marcos to Sportsplex Drive (April 28, 2023 from 6:00 p.m. to 8:00 p.m.)

#### STANDARD DETAILS (REFER TO):

TXDOT BC (1) – 21 through BC (12) - 21



## COA Traffic Control Detail 804S-1

**SPECIFICATIONS FOR STREET CLOSURES:**

The following are based on the posted speed limit of 45 MPH on RR12 and 30 MPH on other affected streets (Bluff, College, San Marcos and Mercer):

Min Taper Length	= 540 feet for RR12 and US 290 (except as shown on plans) = 180 feet for other streets
Min Spacing of Devices	= 90-110 feet on tangent and 45 feet on taper for RR12 and US 290 = 60-75 feet on tangent and 30 feet on taper for other streets
Min Spacing of Signs	= 320 feet for RR12 and US 290 = 120 feet for other streets
Size of Signs	= 48" x 48"
Barricades	= Type III

**Prepared by the City Engineer:**



*CHAD GILPIN 2-28-2023*

Chad Gilpin, P.E.

Date




---

## 2023 TRAFFIC CONTROL, SAFETY AND SECURITY PLAN

---

### Street Closures

This plan for street closure is designed to maintain safety for the interior area of downtown where Founders Day is located. More specifically, it is designed to prevent unauthorized vehicles from entering the Festival and to maintain orderly entrances and exits for participants.

West Mercer at Bluff Street will be closed at 5:00 p.m. on Thursday, April 27, 2023. Wallace from San Marcos to Bluff will be closed at 6:00 a.m. on Friday, April 28, 2023. East Mercer, Wallace, Bluff, San Marcos, and College Streets will be closed at 12:00 noon on Friday April 28, 2023. All streets will re-open to the general public on Sunday, April 30, 2023 when it is safe to do so.

The Founders Day Commission has entered into a Towing Agreement with Drippin' Towin' Services to tow unauthorized vehicles that violate the Street Closure Rules. Such rules have been published in the local newspapers. Signs indicating Street Closures will be posted no less than 48 hours in advance of the Festival. To help avoid accidents during the parade, rules will be provided to participants and orange cones will be used. The rules are found in a later section of this plan.

The Commission has notified the North Hays County Fire Rescue and San Marcos Hays County EMS of the Festival operations. Both entities will be on site throughout the Festival. The Commission has hired deputy sheriffs from Hay County Sheriff's Department to assist with the Festival. The hours of their patrol are included herein.

### Ranch Road 12 and Mercer Street

This intersection will be closed to the public by the use of road barricades with road closure and detour signs. The barricades will be manned by security personnel to allow entrance and egress. This intersection will be used for the following:

1. Headquarters for the EMS and the Sheriff's department.
2. To allow for an ingress and egress for cooks and vendors. Specifically:
  - a. To allow cooks to exit no later than 4:30 p.m. on Friday after setting-up.
  - b. To allow vendors to enter Saturday morning from 6:00 - 9:00 a.m.
3. To allow vendors to leave on Sunday when it is safe to do so.
4. Allow cooks who must leave early to exit on Sunday between 6:00 a.m. - 8:00 a.m.

No other vehicles will be allowed to use this intersection except an emergency vehicle.

### **Ranch Road 12 and Wallace**

This intersection will be closed to the public by the use of Type III Road Barricades and Road Closed signs. The barricades will be manned by security personnel to allow entrance and egress. This intersection will be used for the following:

1. To allow an entrance and egress for cooks on Friday afternoon. Specifically:
  - a. To allow cooks to enter under the direction of the Cook Off Club
  - b. To allow cooks to exit no later than 4:30 p.m. on Friday.
2. To allow cooks to leave on Sunday when all clear is given by the Hays County Sheriff.

### **San Marcos and Wallace (closed at US 290):**

This intersection will be closed to the public by the use of road barricades with road closure and detour signs. The barricades will be manned by security personnel to allow entrance and egress. Portable toilets will also be placed at this intersection and used to limit traffic. This intersection will be used for the following:

1. To allow an entrance for cooks on Friday afternoon. Specifically:
  - a. To allow cooks to enter no earlier than as allowed in at the direction of the Cook Off Club.
  - b. Cooks must present an "Entrance Form" to the attendant to be admitted.
  - c. All cook vehicles must be out of the downtown area after unloading by 4:30 p.m.
  - d. After setting-up their equipment, the cooks will depart at the Mercer and RR 12 exit. The intersection will close at 4:00 p.m. and remain closed until the Hays County Sheriff's department deems it is safe to open.

### **Shell's drive-thru:**

Portable toilets/trash roll-offs will be used as barricade here.

### **College and Wallace (closed at US 290):**

This intersection will be closed to the public by the use of road barricades with road closure sign and detour signs. The barricades will be manned by security personnel to allow entrance and egress. Roll-off trash containers, portable toilets, and a large trailer occupied by a food vendor will also be placed at this intersection and used to limit traffic. This intersection will be used for the following:

1. To allow an entrance for vendors on Saturday. Specifically:
  - a. To allow vendors to enter from 6:00 a.m. - 9:00 a.m.
  - b. Vendors must present an "Entrance Form" to the attendant to be admitted.
  - c. All vendor vehicles must be out of the downtown area after unloading by 9:00 a.m.
2. To allow an entrance for vendors on Saturday

### **Wallace and Bluff (closed at US 290):**

This intersection will be closed to the public by the use of road barricades with road closure, do not enter and one way signage. The barricades will be manned by security personnel to allow entrance and egress. The intersection is scheduled to be blocked on Friday at 12:00 noon and will not re-open until the festival ends on Sunday evening at which time the Hays County Sheriff's deems that it is safe to do so.

### **Mercer and Bluff:**

This intersection will be closed to the public by the use of road barricades with road closure signs. The barricades will be manned by security personnel to allow entrance and egress. This intersection will be used for the following:

1. To allow an exit for vendors on Saturday morning. Specifically:
  - a. To allow vendors to exit between 6:00 a.m. and 9:00 a.m.
2. To allow an egress for all vendors on Sunday.
3. To allow Garnett Propane trucks to enter and exit.

**Old Fitzhugh Road and Mercer Street:** This intersection will be closed to the public by the use of road barricades with road closure signs. The barricades will be manned by security personnel to allow entrance and egress. This intersection will be used for the following:

1. To allow an entrance for food vendors and cooks on Friday from 12:01 p.m. until 3:00 p.m.
2. To allow an entrance for vendors on Friday from 3:00 p.m. until 4:30 p.m.

## DEPUTY PATROL SCHEDULE

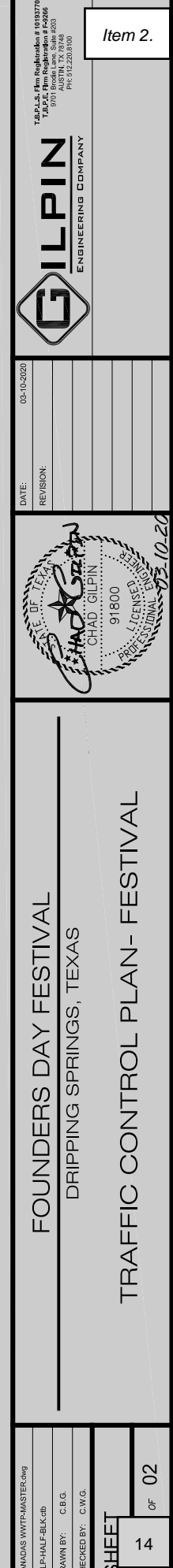
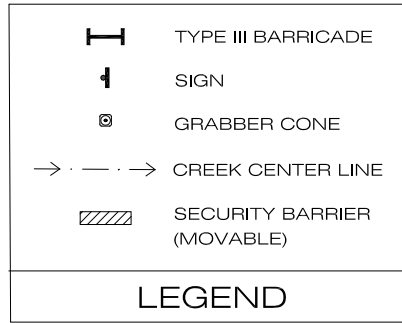
We will contract with the Hays County Sheriff's office and Gary Job Corp to provide security. Deputies and Gary Job Corp Security Officers will be present from when the streets close on April 28, 2023 at 12:00 pm until the streets re-open to the public on April 30, 2023 once deemed safe by the Hays County Sheriffs.

## PARADE SAFETY

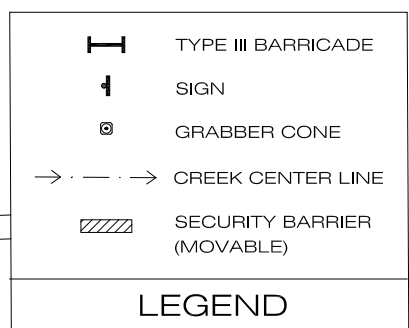
The Commission has 42" high safety cones with top loops and pennant flags to be used along the parade route to keep crowds from moving into the parade route. Parade rules have also been adopted:

- Use of Alcoholic Beverages is strictly prohibited.
- Non-parade vehicles are not allowed in the staging area. The staging area consists of the old Walnut Springs Elementary School parking areas and roadways, and the DSISD Administrative campus parking areas and driveways. Participants may be dropped off at the driveway entrances to the old Walnut Springs Elementary School campus on Sportsplex Drive and walk to their designated staging area.
- Parade vehicles must enter the staging area they are assigned to at the parade safety meeting. Please observe the parade volunteer's instructions and directions.
- Only those vehicles with an official entry card will be allowed to enter the staging area. Those not holding an official entry card will not be able to participate.
- Entry cards will be provided at a mandatory parade pre-meeting held on April 13, 2023 at 6:30 pm at Dripping Springs Ranch Park:
  - Every approved parade participant must send an adult representative to the pre-parade meeting.

- Those entries that have been approved, but do not attend the pre-parade meeting will not be allowed to participate.
  - There will be no refunds for parade entries that have been approved and do not attend the pre-parade meeting.
- Driving or parking vehicles on any grassy areas of the campus is absolutely prohibited.
  - Staging will begin at 4:30pm and vehicles will be allowed to enter only until 6:00 pm.
  - Once arriving in the staging area, your group may join the line up in the designated group areas, “A”, “B”, or “C”, at your designated spot. Please observe the parade volunteer’s instructions and directions.
  - You must turn in the “Parade Participant Card” that you received at the mandatory Parade safety meeting upon arrival. Completion of this card is required so that the Master of Ceremony may properly introduce your group.
  - If your entry includes animals, you are expected to have a waste detail walking immediately behind your group with the appropriate shovels and buckets. If you do not have the appropriate clean-up detail, entry in the parade will be denied.
  - If your entry includes animals, you are expected to maintain control of your animal at all times. Riders not exhibiting control will be removed from the parade for their own and spectators safety.
  - If your group will be throwing candy, you must have an adult walker on each side and behind the float or vehicle to ensure spectators or children do not reach near or under the vehicles. Candy must be thrown underhand and at the feet of the spectators. Any group throwing overhand or directly at a spectator will be asked to stop and will not be invited to participate in subsequent parades.
  - If your group would like to throw any items other than candy, it must be approved by a parade official at the pre-parade meeting.
  - Follow the parade route and follow the instructions and directions of the parade route. Do not ask to leave the parade route early.
  - If emergency vehicles need to leave the parade suddenly to answer an emergency, please get out of the way to facilitate their departure.
  - Participants are not allowed to get on or off your float or vehicle while it is in motion or anywhere on the parade route.
  - Do not allow participants to start dismantling your float until the float has returned to the staging area and is safely parked.



FOUNDERS DAY FESTIVAL DRIPPING SPRINGS, TEXAS		CHAD GILPIN 91800		DATE: 03-10-2020 REVISION:		T&P-A.S. (Jim Rockswold) # 01937807866 T&P-A.S. (Chad Gilpin) # 01937807866 1001 Broadview Lane, Suite #203 Austin, TX 78748 (512) 452-2250 (512) 452-0924		Item 2.	
NDAS WYTH-MASTER.dwg		LE-HALF-BLK.dwg		C.B.G.		C.W.G.		SHEET 14 OF 02	
TRAFFIC CONTROL PLAN- FESTIVAL									



DATE: \_\_\_\_\_  
FILE: \_\_\_\_\_

- WORKER SAFETY NOTES:**

1. Workers on foot who are exposed to traffic or to construction equipment within the right-of-way shall wear high-visibility safety apparel meeting the requirements of ISEA "American National Standard for High-Visibility Apparel," or equivalent revisions, and labeled as ANSI 107-2004 standard performance for Class 2 or 3 risk exposure. Class 3 garments should be considered for high traffic volume work areas or night time work.
2. Except in emergency situations, flagger stations shall be illuminated when flagging is used at night.

## COMPLIANT WORKZONE TRAFFIC CONTROL DEVICES

1. Only pre-qualified products shall be used. The "Compliant Work Zone Traffic Control Devices List" (CWZTCD) describes pre-qualified products and their sources.
2. Work zone traffic control devices shall be compliant with the Manual for Assessing safety Hardware (MASH).

<http://www.txdot.gov>

COMPLIANT WORK ZONE TRAFFIC CONTROL DEVICES LIST (CWZTCD)
DEPARTMENTAL MATERIAL SPECIFICATIONS (DMS)
MATERIAL PRODUCER LIST (MPL)
ROADWAY DESIGN MANUAL - SEE "MANUALS (ONLINE MANUALS)"
STANDARD HIGHWAY SIGN DESIGNS FOR TEXAS (SHSD)
TEXAS MANUAL ON UNIFORM TRAFFIC CONTROL DEVICES (TMUTCD)
TRAFFIC ENGINEERING STANDARD SHEETS

**SHEET 1 OF 12**



Texas Department of Transportation

**Traffic  
Safety  
Division  
Standard**

## BARRICADE AND CONSTRUCTION GENERAL NOTES AND REQUIREMENTS

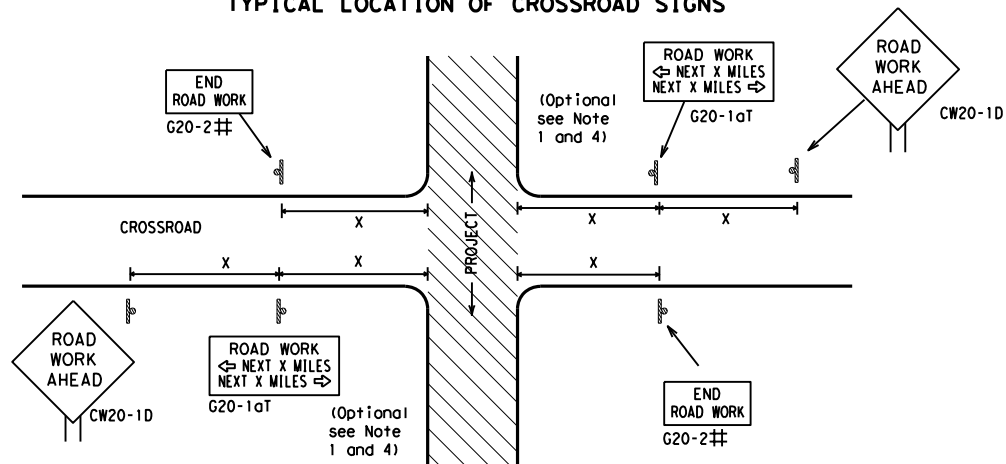
BC (1) -21

FILE:	bc-21.dgn	DN:	TxDOT	CK:	TxDOT	DW:	TxDOT	CK:	TxDOT
(C) TxDOT November 2002 REVISIONS 4-03 7-13 9-07 8-14 5-10 5-21		CONT	SECT	JOB		HIGHWAY			
		DIST	COUNTY		16				



DISCLAIMER: The use of this standard is governed by the "Texas Engineering Practice Act". No warranty of any kind is made by TxDOT for any purpose whatsoever. TxDOT assumes no responsibility for the conversion of this standard to other formats or for incorrect results or damages resulting from its use.

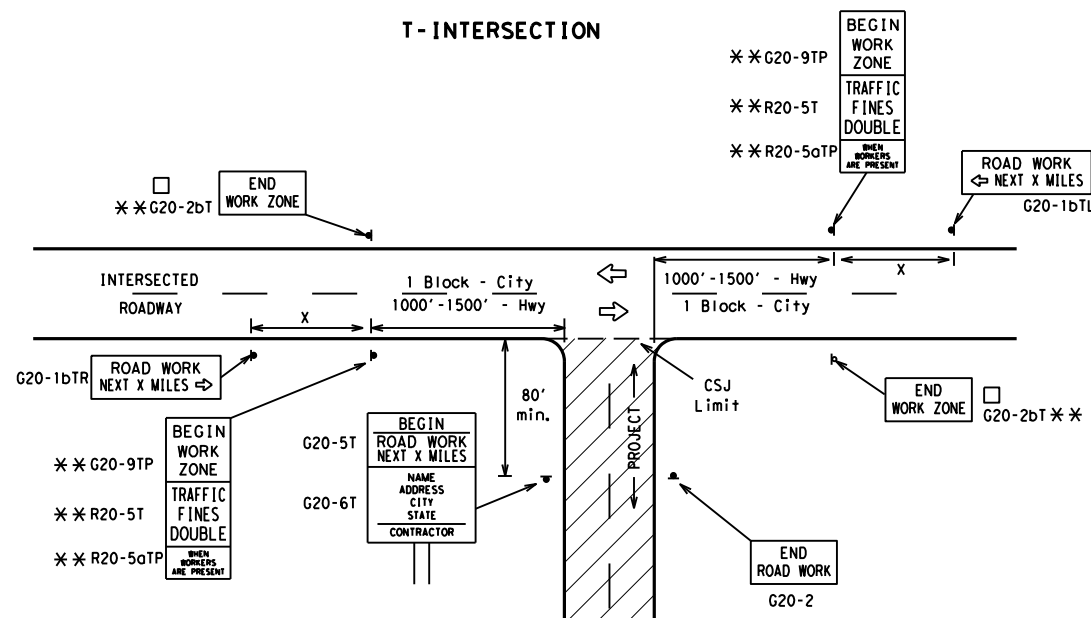
### TYPICAL LOCATION OF CROSSROAD SIGNS



## May be mounted on back of "ROAD WORK AHEAD" (CW20-1D) sign with approval of Engineer. (See note 2 below)

1. The typical minimum signing on a crossroad approach should be a "ROAD WORK AHEAD" (CW20-1D) sign and a (G20-2) "END ROAD WORK" sign, unless noted otherwise in plans.
2. The Engineer may use the reduced size 36" x 36" ROAD WORK AHEAD (CW20-1D) sign mounted back to back with the reduced size 36" x 18" "END ROAD WORK" (G20-2) sign on low volume crossroads (see Note 4 under "Typical Construction Warning Sign Size and Spacing"). See the "Standard Highway Sign Designs for Texas" manual for sign details. The Engineer may omit the advance warning signs on low volume crossroads. The Engineer will determine whether a road is low volume as per TMUTCD Part 5. This information shall be shown in the plans.
3. Based on existing field conditions, the Engineer/Inspector may require additional signs such as FLAGGER AHEAD, LOOSE GRAVEL, or other appropriate signs. When additional signs are required, these signs will be considered part of the minimum requirements. The Engineer/Inspector will determine the proper location and spacing of any sign not shown on the BC sheets, Traffic Control Plan sheets or the Work Zone Standard Sheets.
4. The "ROAD WORK NEXT X MILES" (G20-1aT) sign shall be required at high volume crossroads to advise motorists of the length of construction in either direction from the intersection. The Engineer will determine whether a roadway is considered high volume.
5. Additional traffic control devices may be shown elsewhere in the plans for higher volume crossroads.
6. When work occurs in the intersection area, appropriate traffic control devices, as shown elsewhere in the plans or as determined by the Engineer/Inspector, shall be in place.

### T-INTERSECTION



### CSJ LIMITS AT T-INTERSECTION

1. The Engineer will determine the types and location of any additional traffic control devices, such as a flagger and accompanying signs, or other signs, that should be used when work is being performed at or near an intersection.
2. If construction closes the road at a T-intersection, the Contractor shall place the "CONTRACTOR NAME" (G20-6T) sign behind the Type 3 Barricades for the road closure (see BC(10) also). The "ROAD WORK NEXT X MILES" left arrow (G20-1bTL) and "ROAD WORK NEXT X MILES" right arrow (G20-1bTR) signs shall be replaced by the detour signing called for in the plans.

### TYPICAL CONSTRUCTION WARNING SIGN SIZE AND SPACING

SIZE			SPACING	
Sign Number or Series	Conventional Road	Expressway/Freeway	Posted Speed	Sign Spacing "x"
CW20 <sup>4</sup>	48" x 48"	48" x 48"	MPH	Feet (Apprx.)
CW21			30	120
CW22			35	160
CW23			40	240
CW25			45	320
CW1, CW2, CW7, CW8, CW9, CW11, CW14	36" x 36"	48" x 48"	50	400
CW3, CW4, CW5, CW6, CW8-3, CW10, CW12	48" x 48"	48" x 48"	55	500 <sup>2</sup>
			60	600 <sup>2</sup>
			65	700 <sup>2</sup>
			70	800 <sup>2</sup>
			75	900 <sup>2</sup>
			80	1000 <sup>2</sup>
			*	*

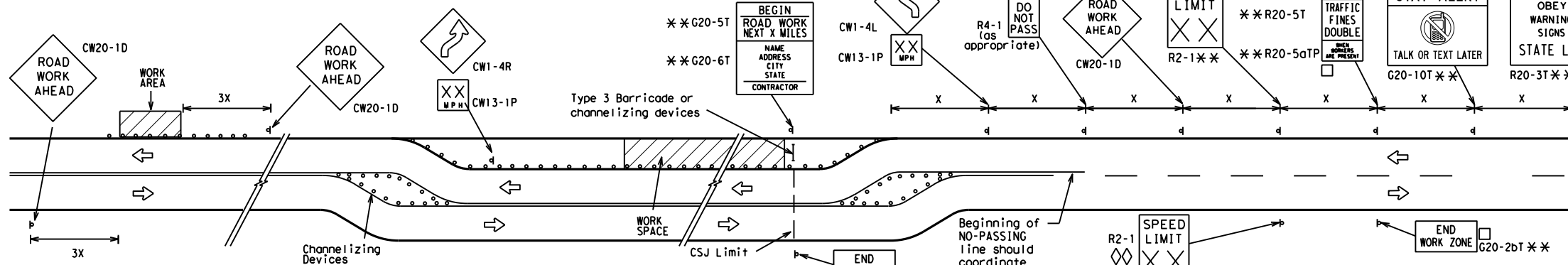
\* For typical sign spacings on divided highways, expressways and freeways, see Part 6 of the "Texas Manual on Uniform Traffic Control Devices" (TMUTCD) typical application diagrams or TCP Standard Sheets.

Δ Minimum distance from work area to first Advance Warning sign nearest the work area and/or distance between each additional sign.

### GENERAL NOTES

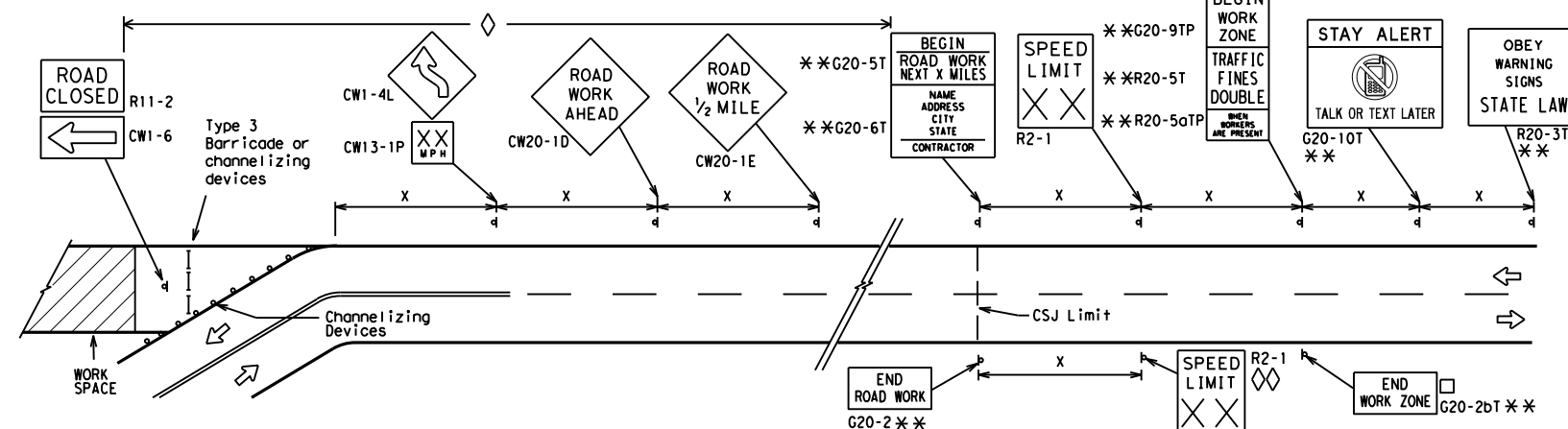
1. Special or larger size signs may be used as necessary.
2. Distance between signs should be increased as required to have 1500 feet advance warning.
3. Distance between signs should be increased as required to have 1/2 mile or more advance warning.
4. 36" x 36" "ROAD WORK AHEAD" (CW20-1D) signs may be used on low volume crossroads at the discretion of the Engineer as per TMUTCD Part 5. See Note 2 under "Typical Location of Crossroad Signs".
5. Only diamond shaped warning sign sizes are indicated.
6. See sign size listing in "TMUTCD", Sign Appendix or the "Standard Highway Sign Designs for Texas" manual for complete list of available sign design sizes.

### WORK AREAS IN MULTIPLE LOCATIONS WITHIN CSJ LIMITS



When extended distances occur between minimal work spaces, the Engineer/Inspector should ensure additional "ROAD WORK AHEAD" (CW20-1D) signs are placed in advance of these work areas to remind drivers they are still within the project limits. See the applicable TCP sheets for exact location and spacing of signs and channelizing devices.

### SAMPLE LAYOUT OF SIGNING FOR WORK BEGINNING DOWNSTREAM OF THE CSJ LIMITS



### NOTES

The Contractor shall determine the appropriate distance to be placed on the G20-1 series signs and "BEGIN ROAD WORK NEXT X MILES" (G20-5T) sign for each specific project. This distance shall replace the "X" and shall be rounded to the nearest whole mile with the approval of the Engineer. No decimals shall be used.

- The "BEGIN WORK ZONE" (G20-9TP) and "END WORK ZONE" (G20-2bT) shall be used as shown on the sample layout when advance signs are required outside the CSJ Limits. They inform the motorist of entering or leaving a part of the work zone lying outside the CSJ Limits where traffic fines may double if workers are present.

\*\* CSJ limit signing is required for highway construction and maintenance work, with the exception of mobile operations.

◇ Area for placement of "ROAD WORK AHEAD" (CW20-1D) sign and other signs or devices as called for on the Traffic Control Plan.

◇◇ Contractor will install a regulatory speed limit sign at the end of the work zone.

### LEGEND

—	Type 3 Barricade
○ ○ ○	Channelizing Devices
—	Sign
X	See Typical Construction Warning Sign Size and Spacing chart or the TMUTCD for sign spacing requirements.

SHEET 2 OF 12

Texas Department of Transportation Traffic Safety Division Standard

## BARRICADE AND CONSTRUCTION PROJECT LIMIT

BC(2) - 21

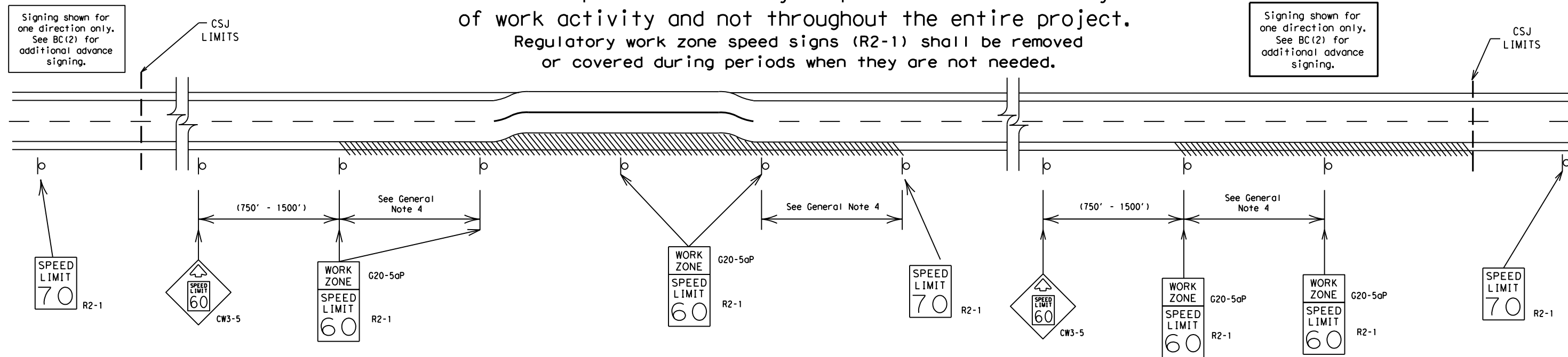
FILE: bc-21.dgn	DN: TxDOT	CK: TxDOT	DW: TxDOT	CK: TxDOT
© TxDOT November 2002	CONT	SECT	JOB	HIGHWAY
REVISIONS				
9-07 8-14				
7-13 5-21				
	DIST	COUNTY		
				17

# TYPICAL APPLICATION OF WORK ZONE SPEED LIMIT SIGNS

Work zone speed limits shall be regulatory, established in accordance with the "Procedures for Establishing Speed Zones," and approved by the Texas Transportation Commission, or by City Ordinance when within Incorporated City Limits.

Reduced speeds should only be posted in the vicinity of work activity and not throughout the entire project.

Regulatory work zone speed signs (R2-1) shall be removed or covered during periods when they are not needed.



## GUIDANCE FOR USE:

### LONG/INTERMEDIATE TERM WORK ZONE SPEED LIMITS

This type of work zone speed limit should be included on the design of the traffic control plans when restricted geometrics with a lower design speed are present in the work zone and modification of the geometrics to a higher design speed is not feasible.

Long/Intermediate Term Work Zone Speed Limit signs, when approved as described above, should be posted and visible to the motorist when work activity is present.

Work activity may also be defined as a change in the roadway that requires a reduced speed for motorists to safely negotiate the work area, including:

- rough road or damaged pavement surface
- substantial alteration of roadway geometrics (diversions)
- construction detours
- grade
- width
- other conditions readily apparent to the driver

As long as any of these conditions exist, the work zone speed limit signs should remain in place.

### SHORT TERM WORK ZONE SPEED LIMITS

This type of work zone speed limit may be included on the design of the traffic control plans when workers or equipment are not behind concrete barrier, when work activity is within 10 feet of the traveled way or actually in the traveled way.

Short Term Work Zone Speed Limit signs should be posted and visible to the motorists only when work activity is present. When work activity is not present, signs shall be removed or covered.  
(See Removing or Covering on BC(4)).

## GENERAL NOTES

- Regulatory work zone speed limits should be used only for sections of construction projects where speed control is of major importance.
- Regulatory work zone speed limit signs shall be placed on supports at a 7 foot minimum mounting height.
- Speed zone signs are illustrated for one direction of travel and are normally posted for each direction of travel.
- Frequency of work zone speed limit signs should be:  
40 mph and greater 0.2 to 2 miles  
35 mph and less 0.2 to 1 mile
- Regulatory speed limit signs shall have black legend and border on a white reflective background (See "Reflective Sheeting" on BC(4)).
- Fabrication, erection and maintenance of the "ADVANCE SPEED LIMIT" (CW3-5) sign, "WORK ZONE" (G20-5aP) plaque and the "SPEED LIMIT" (R2-1) signs shall not be paid for directly, but shall be considered subsidiary to Item 502.
- Turning signs from view, laying signs over or down will not be allowed, unless as otherwise noted under "REMOVING OR COVERING" on BC(4).
- Techniques that may help reduce traffic speeds include but are not limited to:  
A. Law enforcement.  
B. Flagger stationed next to sign.  
C. Portable changeable message sign (PCMS).  
D. Low-power (drone) radar transmitter.  
E. Speed monitor trailers or signs.
- Speeds shown on details above are for illustration only.  
Work Zone Speed Limits should only be posted as approved for each project.
- For more specific guidance concerning the type of work, work zone conditions and factors impacting allowable regulatory construction speed zone reduction see TxDOT form #1204 in the TxDOT e-form system.

SHEET 3 OF 12



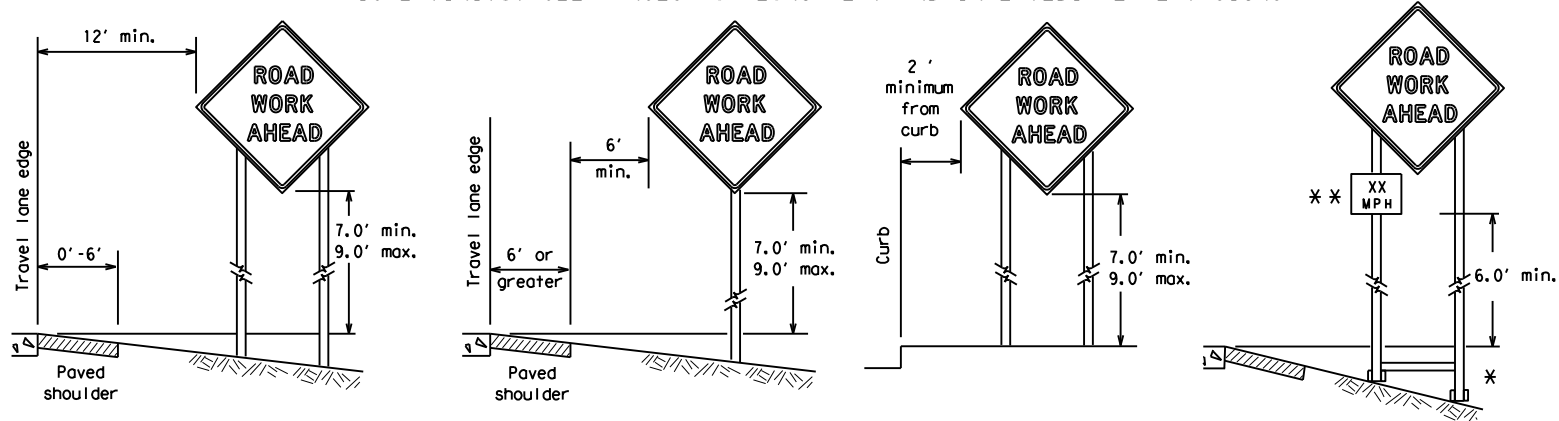
## BARRICADE AND CONSTRUCTION WORK ZONE SPEED LIMIT

BC (3) - 21

FILE: bc-21.dgn	DN: TxDOT	CK: TxDOT	DW: TxDOT	CK: TxDOT
© TxDOT November 2002	CONT	SECT	JOB	HAZARD
REVISIONS				
9-07 8-14				
7-13 5-21				
	DIST	COUNTY		

DISCLAIMER: The use of this standard is governed by the "Texas Engineering Practice Act". No warranty of any kind is made by TxDOT for any purpose whatsoever. TxDOT assumes no responsibility for the conversion of this standard to other formats or for incorrect results or damages resulting from its use.

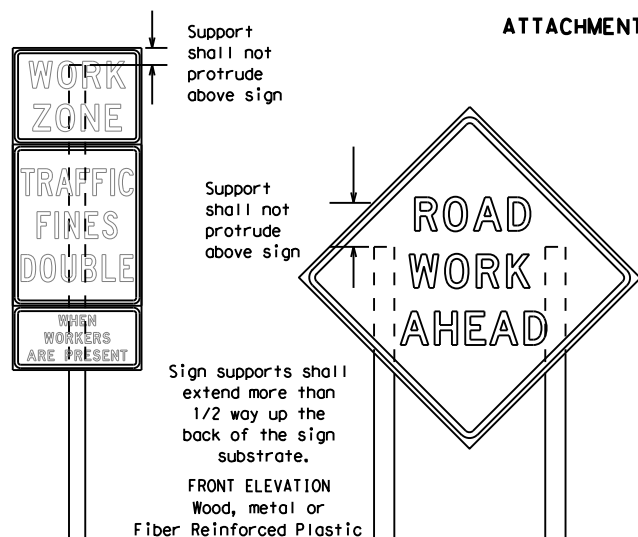
## TYPICAL MINIMUM CLEARANCES FOR LONG TERM AND INTERMEDIATE TERM SIGNS



\* When placing skid supports on unlevel ground, the leg post lengths must be adjusted so the sign appears straight and plumb. Objects shall NOT be placed under skids as a means of leveling.

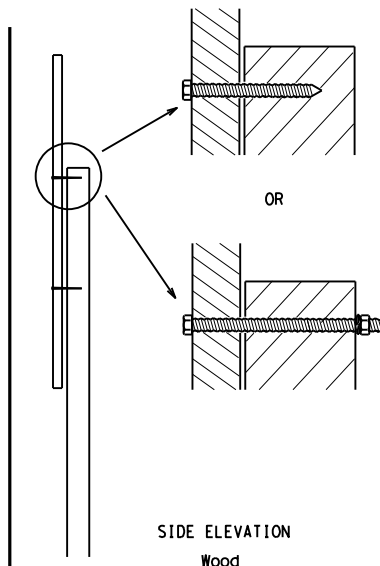
\*\* When plaques are placed on dual-leg supports, they should be attached to the upright nearest the travel lane. Supplemental plaques (advisory or distance) should not cover the surface of the parent sign.

## ATTACHMENT FOR SIGN SUPPORTS



Splicing embedded perforated square metal tubing in order to extend post height will only be allowed when the splice is made using four bolts, two above and two below the splice point. Splice must be located entirely behind the sign substrate, not near the base of the support. Splice insert lengths should be at least 5 times nominal post size, centered on the splice and of at least the same gauge material.

Attachment to wooden supports will be by bolts and nuts or screws. Use TxDOT's or manufacturer's recommended procedures for attaching sign substrates to other types of sign supports



Nails shall NOT be allowed. Each sign shall be attached directly to the sign support. Multiple signs shall not be joined or spliced by any means. Wood supports shall not be extended or repaired by splicing or other means.

## GENERAL NOTES FOR WORK ZONE SIGNS

- Contractor shall install and maintain signs in a straight and plumb condition and/or as directed by the Engineer.
- Wooden sign posts shall be painted white.
- Barricades shall NOT be used as sign supports.
- All signs shall be installed in accordance with the plans or as directed by the Engineer. Signs shall be used to regulate, warn, and guide the traveling public safely through the work zone.
- The Contractor may furnish either the sign design shown in the plans or in the "Standard Highway Sign Designs for Texas" (SHSD). The Engineer/Inspector may require the Contractor to furnish other work zone signs that are shown in the TMUTCD but may have been omitted from the plans. Any variation in the plans shall be documented by written agreement between the Engineer and the Contractor's Responsible Person. All changes must be documented in writing before being implemented. This can include documenting the changes in the Inspector's TxDOT diary and having both the Inspector and Contractor initial and date the agreed upon changes.
- The Contractor shall furnish sign supports listed in the "Compliant Work Zone Traffic Control Device List" (CWZTCD) for small roadside signs. Supports for temporary large roadside signs shall meet the requirements detailed on the Temporary Large Roadside Signs (TLRS) standard sheets. The Contractor shall install the sign support in accordance with the manufacturer's recommendations. If there is a question regarding installation procedures, the Contractor shall furnish the Engineer a copy of the manufacturer's installation recommendations so the Engineer can verify the correct procedures are being followed.
- The Contractor is responsible for installing signs on approved supports and replacing signs with damaged or cracked substrates and/or damaged or marred reflective sheeting as directed by the Engineer/Inspector.
- Identification markings may be shown only on the back of the sign substrate. The maximum height of letters and/or company logos used for identification shall be 1 inch.
- The Contractor shall replace damaged wood posts. New or damaged wood sign posts shall not be spliced.

## DURATION OF WORK (as defined by the "Texas Manual on Uniform Traffic Control Devices" Part 6)

- The types of sign supports, sign mounting height, the size of signs, and the type of sign substrates can vary based on the type of work being performed. The Engineer is responsible for selecting the appropriate size sign for the type of work being performed. The Contractor is responsible for ensuring the sign support, sign mounting height and substrate meets manufacturer's recommendations in regard to crashworthiness and duration of work requirements.
  - Long-term stationary - work that occupies a location more than 3 days.
  - Intermediate-term stationary - work that occupies a location more than one daylight period up to 3 days, or nighttime work lasting more than one hour.
  - Short-term stationary - daytime work that occupies a location for more than 1 hour in a single daylight period.
  - Short, duration - work that occupies a location up to 1 hour.
  - Mobile - work that moves continuously or intermittently (stopping for up to approximately 15 minutes.)

## SIGN MOUNTING HEIGHT

- The bottom of Long-term/Intermediate-term signs shall be at least 7 feet, but not more than 9 feet, above the paved surface, except as shown for supplemental plaques mounted below other signs.
- The bottom of Short-term/Short Duration signs shall be a minimum of 1 foot above the pavement surface but no more than 2 feet above the ground.
- Long-term/Intermediate-term Signs may be used in lieu of Short-term/Short Duration signing.
- Short-term/Short Duration signs shall be used only during daylight and shall be removed at the end of the workday or raised to appropriate Long-term/Intermediate sign height.
- Regulatory signs shall be mounted at least 7 feet, but not more than 9 feet, above the paved surface regardless of work duration.

## SIZE OF SIGNS

- The Contractor shall furnish the sign sizes shown on BC (2) unless otherwise shown in the plans or as directed by the Engineer.

## SIGN SUBSTRATES

- The Contractor shall ensure the sign substrate is installed in accordance with the manufacturer's recommendations for the type of sign support that is being used. The CWZTCD lists each substrate that can be used on the different types and models of sign supports.
- "Mesh" type materials are NOT an approved sign substrate, regardless of the tightness of the weave.
- All wooden individual sign panels fabricated from 2 or more pieces shall have one or more plywood cleat, 1/2" thick by 6" wide, fastened to the back of the sign and extending fully across the sign. The cleat shall be attached to the back of the sign using wood screws that do not penetrate the face of the sign panel. The screws shall be placed on both sides of the splice and spaced at 6" centers. The Engineer may approve other methods of splicing the sign face.

## REFLECTIVE SHEETING

- All signs shall be retroreflective and constructed of sheeting meeting the color and retro-reflectivity requirements of DMS-8300 for rigid signs or DMS-8310 for roll-up signs. The web address for DMS specifications is shown on BC(1).
- White sheeting, meeting the requirements of DMS-8300 Type A, shall be used for signs with a white background.
- Orange sheeting, meeting the requirements of DMS-8300 Type B<sub>FL</sub> or Type C<sub>FL</sub>, shall be used for rigid signs with orange backgrounds.

## SIGN LETTERS

- All sign letters and numbers shall be clear, and open rounded type uppercase alphabet letters as approved by the Federal Highway Administration (FHWA) and as published in the "Standard Highway Sign Design for Texas" manual. Signs, letters and numbers shall be of first class workmanship in accordance with Department Standards and Specifications.

## REMOVING OR COVERING

- When sign messages may be confusing or do not apply, the signs shall be removed or completely covered.
- Long-term stationary or intermediate stationary signs installed on square metal tubing may be turned away from traffic 90 degrees when the sign message is not applicable. This technique may not be used for signs installed in the median of divided highways or near any intersections where the sign may be seen from approaching traffic.
- Signs installed on wooden skids shall not be turned at 90 degree angles to the roadway. These signs should be removed or completely covered when not required.
- When signs are covered, the material used shall be opaque, such as heavy mil black plastic, or other materials which will cover the entire sign face and maintain their opaque properties under automobile headlights at night, without damaging the sign sheeting.
- Burlap shall NOT be used to cover signs.
- Duct tape or other adhesive material shall NOT be affixed to a sign face.
- Signs and anchor stubs shall be removed and holes backfilled upon completion of work.

## SIGN SUPPORT WEIGHTS

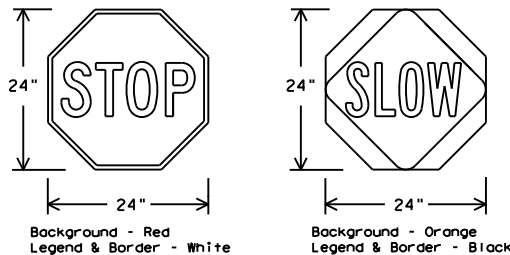
- Where sign supports require the use of weights to keep from turning over, the use of sandbags with dry, cohesionless sand should be used.
- The sandbags will be tied shut to keep the sand from spilling and to maintain a constant weight.
- Rock, concrete, iron, steel or other solid objects shall not be permitted for use as sign support weights.
- Sandbags should weigh a minimum of 35 lbs and a maximum of 50 lbs.
- Sandbags shall be made of a durable material that tears upon vehicular impact. Rubber (such as tire inner tubes) shall NOT be used.
- Rubber ballasts designed for channelizing devices should not be used for ballast on portable sign supports. Sign supports designed and manufactured with rubber bases may be used when shown on the CWZTCD list.
- Sandbags shall only be placed along or laid over the base supports of the traffic control device and shall not be suspended above ground level or hung with rope, wire, chains or other fasteners. Sandbags shall be placed along the length of the skids to weigh down the sign support.
- Sandbags shall NOT be placed under the skid and shall not be used to level sign supports placed on slopes.

## FLAGS ON SIGNS

- Flags may be used to draw attention to warning signs. When used, the flag shall be 16 inches square or larger and shall be orange or fluorescent red-orange in color. Flags shall not be allowed to cover any portion of the sign face.

## STOP/SLOW PADDLES

- STOP/SLOW paddles are the primary method to control traffic by flaggers. The STOP/SLOW paddle size should be 24" x 24".
- STOP/SLOW paddles shall be retroreflectized when used at night.
- STOP/SLOW paddles may be attached to a staff with a minimum length of 6' to the bottom of the sign.
- Any lights incorporated into the STOP or SLOW paddle faces shall only be as specifically described in Section 6E.03 Hand Signaling Devices in the TMUTCD.



SHEETING REQUIREMENTS (WHEN USED AT NIGHT)		
USAGE	COLOR	SIGN FACE MATERIAL
BACKGROUND	RED	TYPE B OR C SHEETING
BACKGROUND	ORANGE	TYPE B <sub>FL</sub> OR C <sub>FL</sub> SHEETING
LEGEND & BORDER	WHITE	TYPE B OR C SHEETING
LEGEND & BORDER	BLACK	ACRYLIC NON-REFLECTIVE FILM

## CONTRACTOR REQUIREMENTS FOR MAINTAINING PERMANENT SIGNS WITHIN THE PROJECT LIMITS

- Permanent signs are used to give notice of traffic laws or regulations, call attention to conditions that are potentially hazardous to traffic operations, show route designations, destinations, directions, distances, services, points of interest, and other geographical, recreational, specific service (LOGO), or cultural information. Drivers proceeding through a work zone need the same, if not better route guidance as normally installed on a roadway without construction.
- When permanent regulatory or warning signs conflict with work zone conditions, remove or cover the permanent signs until the permanent sign message matches the roadway condition. For details for covering large guide signs see the TS-CD standard.
- When existing permanent signs are moved and relocated due to construction purposes, they shall be visible to motorists at all times.
- If existing signs are to be relocated on their original supports, they shall be installed on crashworthy bases as shown on the SMD Standard sheets. The signs shall meet the required mounting heights shown on the BC Sheets or the SMD Standards. This work should be paid for under the appropriate pay item for relocating existing signs.
- If permanent signs are to be removed and relocated using temporary supports, the Contractor shall use crashworthy supports as shown on the BC standard sheets, TLRS standard sheets or the CWZTCD list. The signs shall meet the required mounting heights shown on the BC, or the SMD standard sheets during construction. This work should be paid for under the appropriate pay item for relocating existing signs.
- Any sign or traffic control device that is struck or damaged by the Contractor or his/her construction equipment shall be replaced as soon as possible by the Contractor to ensure proper guidance for the motorists. This will be subsidiary to Item 502.

SHEET 4 OF 12

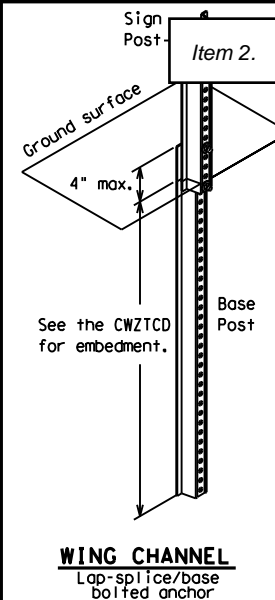
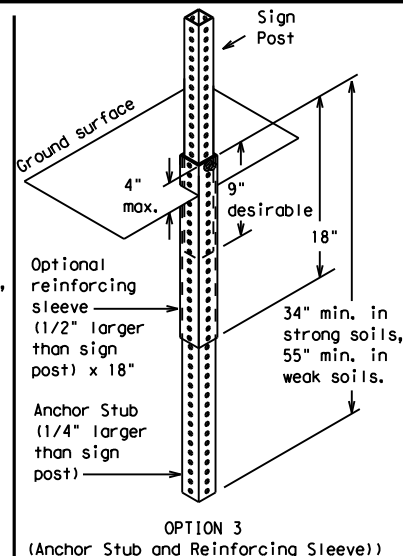
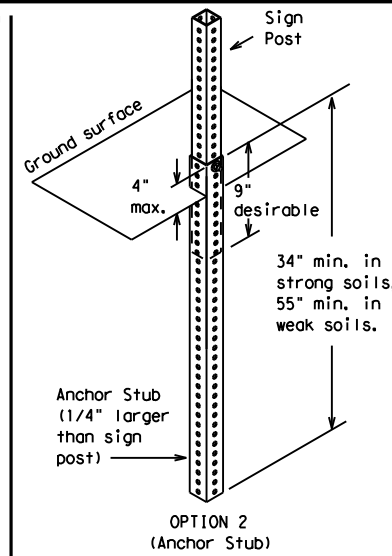
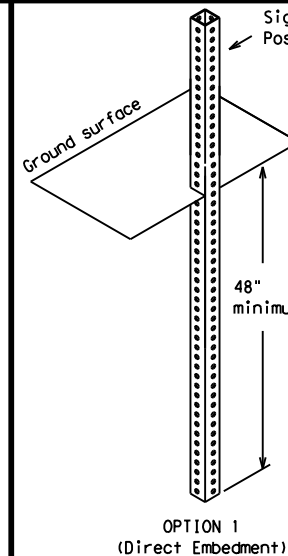
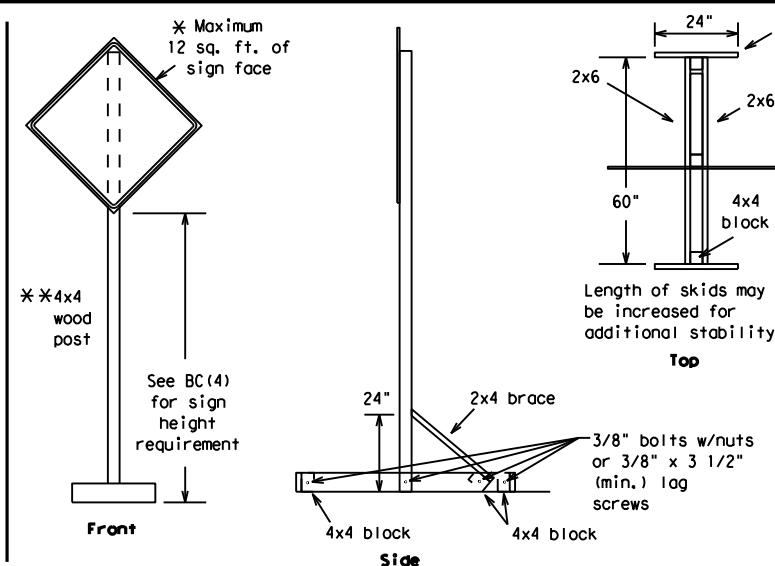
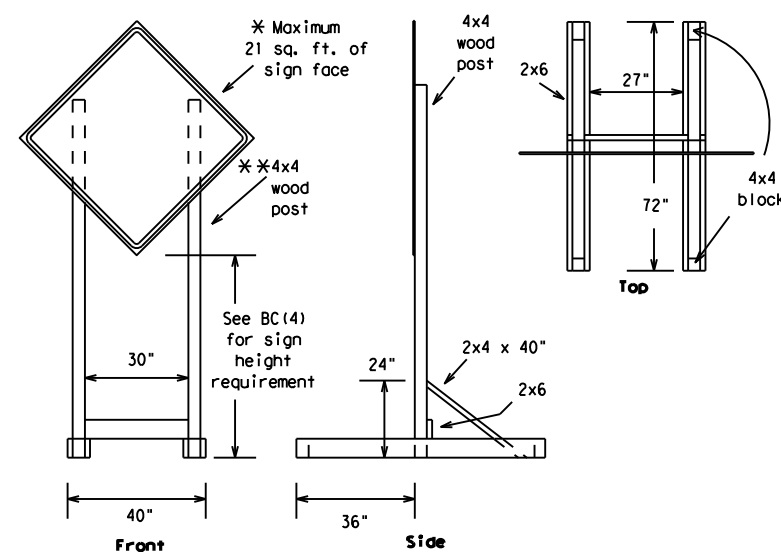


## BARRICADE AND CONSTRUCTION TEMPORARY SIGN NOTES

BC (4) -21

FILE: bc-21.dgn	DN: TxDOT	CK: TxDOT	DW: TxDOT	CK: TxDOT
© TxDOT November 2002	CONT	SECT	JOB	HIGHWAY
REVISIONS				
9-07 8-14				19
7-13 5-21				
			COUNTY	

DATE: \_\_\_\_\_  
FILE: \_\_\_\_\_

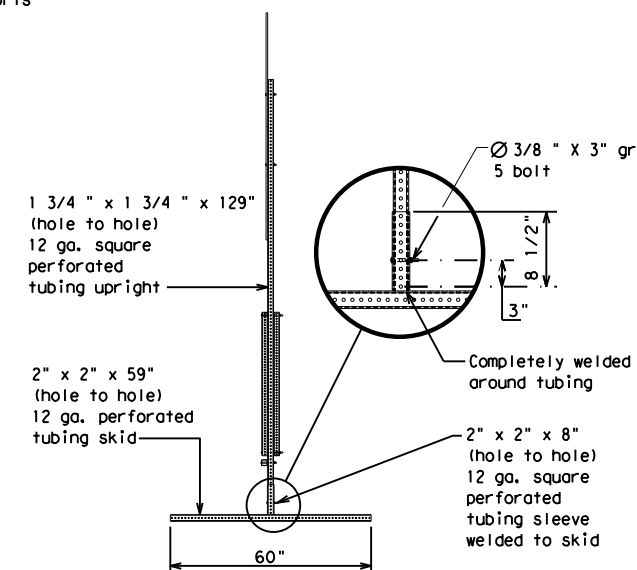
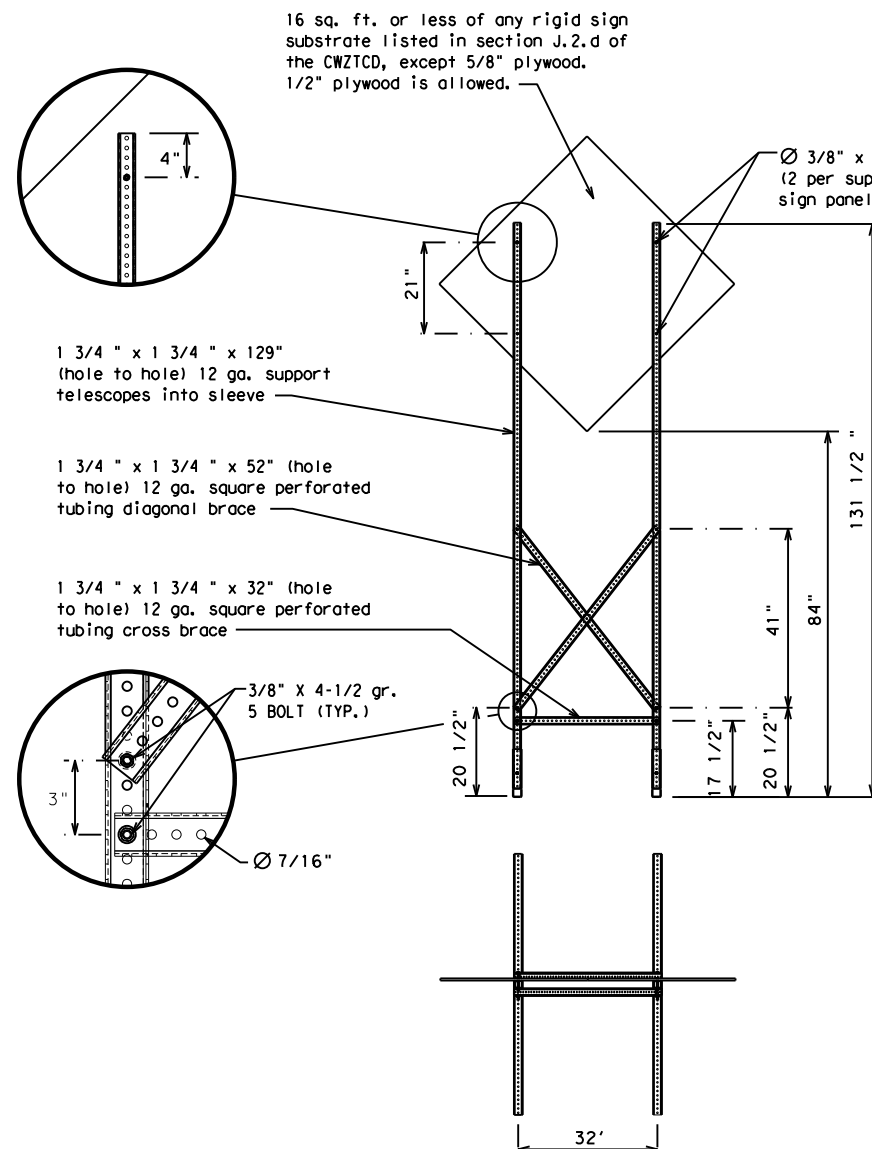
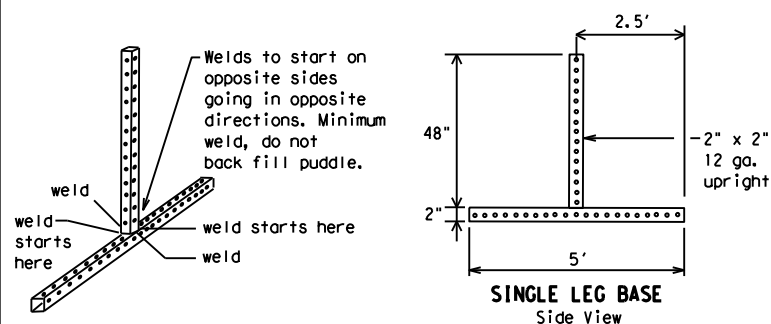
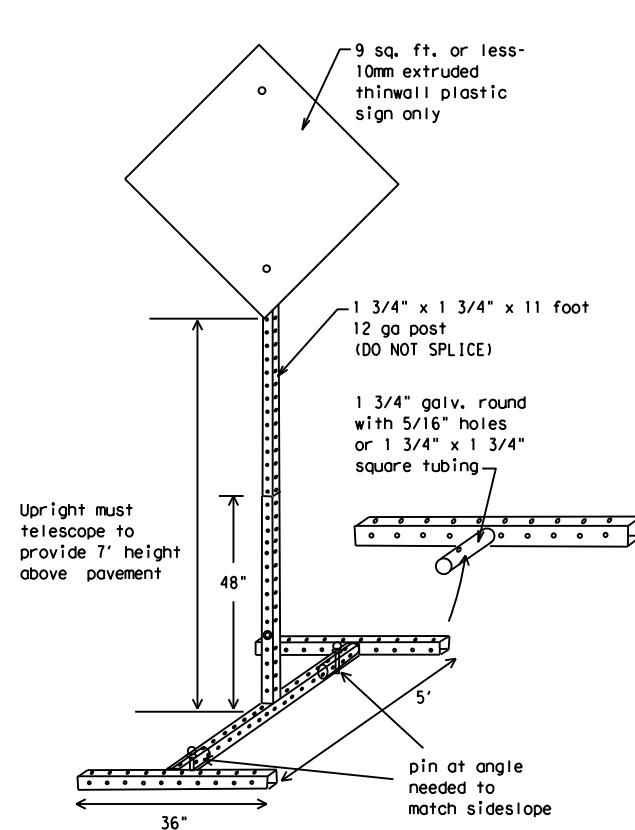


## SKID MOUNTED WOOD SIGN SUPPORTS

\* LONG/INTERMEDIATE TERM STATIONARY - PORTABLE SKID MOUNTED SIGN SUPPORTS

## GROUND MOUNTED SIGN SUPPORTS

Refer to the CWZTCD and the manufacturer's installation procedure for each type sign support.  
The maximum sign square footage shall adhere to the manufacturer's recommendation.  
Two post installations can be used for larger signs.



## WEDGE ANCHORS

Both steel and plastic Wedge Anchor Systems as shown on the SMD Standard Sheets may be used as temporary sign supports for signs up to 10 square feet of sign face. They may be set in concrete or in sturdy soils if approved by the Engineer. (See web address for "Traffic Engineering Standard Sheets" on BC(11)).

## OTHER DESIGNS

MORE DETAILS OF APPROVED LONG/INTERMEDIATE AND SHORT TERM SUPPORTS CAN BE FOUND ON THE CWZTCD LIST. SEE BC(1) FOR WEBSITE LOCATION.

## GENERAL NOTES

1. Nails may be used in the assembly of wooden sign supports, but 3/8" bolts with nuts or 3/8" x 3 1/2" lag screws must be used on every joint for final connection.
2. No more than 2 sign posts shall be placed within a 7 ft. circle, except for specific materials noted on the CWZTCD List.
3. When project is completed, all sign supports and foundations shall be removed from the project site. This will be considered subsidiary to Item 502.

\* See BC(4) for definition of "Work Duration."

※※ Wood sign posts MUST be one piece. Splicing will NOT be allowed. Posts shall be painted white.

☐ See the CWZTCD for the type of sign substrate that can be used for each approved sign support.

**SHEET 5 OF 12**




Texas Department of Transportation

**Traffic  
Safety  
Division  
Standard**

## BARRICADE AND CONSTRUCTION TYPICAL SIGN SUPPORT

**BC (5) - 21**

FILE:	bc-21.dgn	DN:	TxDOT	CK:	TxDOT	DW:	TxDOT	CK:	TxDOT
 TxDOT November 2002		CONT	SECT	JOB		HIGHWAY			
REVISIONS						<div style="border: 2px solid black; padding: 10px; text-align: center; width: 100px; height: 100px; line-height: 100px;">20</div>			
9-07	8-14								
7-13	5-21								
		DIST	COUNTY						

DISCLAIMER: The use of this standard is governed by the "Texas Engineering Practice Act". No warranty of any kind is made by TxDOT for any purpose whatsoever. TxDOT assumes no responsibility for the conversion of this standard to other formats or for incorrect results or damages resulting from its use.

DATE:  
FILE:

WHEN NOT IN USE, REMOVE THE PCMS FROM THE RIGHT-OF-WAY OR PLACE THE PCMS BEHIND BARRIER OR GUARDRAIL WITH SIGN PANEL TURNED PARALLEL TO TRAFFIC

PORTABLE CHANGEABLE MESSAGE SIGNS

1. The Engineer/Inspector shall approve all messages used on portable changeable message signs (PCMS).
2. Messages on PCMS should contain no more than 8 words (about four to eight characters per word), not including simple words such as "TO," "FOR," "AT," etc.
3. Messages should consist of a single phase, or two phases that alternate. Three-phase messages are not allowed. Each phase of the message should convey a single thought, and must be understood by itself.
4. Use the word "EXIT" to refer to an exit ramp on a freeway; i.e., "EXIT CLOSED." Do not use the term "RAMP."
5. Always use the route or interstate designation (IH, US, SH, FM) along with the number when referring to a roadway.
6. When in use, the bottom of a stationary PCMS message panel should be a minimum 7 feet above the roadway, where possible.
7. The message term "WEEKEND" should be used only if the work is to start on Saturday morning and end by Sunday evening at midnight. Actual days and hours of work should be displayed on the PCMS if work is to begin on Friday evening and/or continue into Monday morning.
8. The Engineer/Inspector may select one of two options which are available for displaying a two-phase message on a PCMS. Each phase may be displayed for either four seconds each or for three seconds each.
9. Do not "flash" messages or words included in a message. The message should be steady burn or continuous while displayed.
10. Do not present redundant information on a two-phase message; i.e., keeping two lines of the message the same and changing the third line.
11. Do not use the word "Danger" in message.
12. Do not display the message "LANES SHIFT LEFT" or "LANES SHIFT RIGHT" on a PCMS. Drivers do not understand the message.
13. Do not display messages that scroll horizontally or vertically across the face of the sign.
14. The following table lists abbreviated words and two-word phrases that are acceptable for use on a PCMS. Both words in a phrase must be displayed together. Words or phrases not on this list should not be abbreviated, unless shown in the T MUTCD.
15. PCMS character height should be at least 18 inches for trailer mounted units. They should be visible from at least 1/2 (.5) mile and the text should be legible from at least 600 feet at night and 800 feet in daylight. Truck mounted units must have a character height of 10 inches and must be legible from at least 400 feet.
16. Each line of text should be centered on the message board rather than left or right justified.
17. If disabled, the PCMS should default to an illegible display that will not alarm motorists and will only be used to alert workers that the PCMS has malfunctioned. A pattern such as a series of horizontal solid bars is appropriate.

WORD OR PHRASE	ABBREVIATION
Access Road	ACCS RD
Alternate	ALT
Avenue	AVE
Best Route	BEST RTE
Boulevard	BLVD
Bridge	BRDG
Cannot	CANT
Center	CTR
Construction Ahead	CONST AHD
CROSSING	XING
Detour Route	DETOUR RTE
Do Not	DONT
East	E
Eastbound	(route) E
Emergency	EMER
Emergency Vehicle	EMER VEH
Entrance, Enter	ENT
Express Lane	EXP LN
Expressway	EXPWY
XXXX Feet	XXXX FT
Fog Ahead	FOG AHD
Freeway	FRWY, FWY
Freeway Blocked	FWY BLKD
Friday	FRI
Hazardous Driving	HAZ DRIVING
Hazardous Material	HAZMAT
High-Occupancy	HOV
Vehicle	
Highway	HWY
Hour(s)	HR, HRS
Information	INFO
It Is	ITS
Junction	JCT
Left	LFT
Left Lane	LFT LN
Lane Closed	LN CLOSED
Lower Level	LWR LEVEL
Maintenance	MAINT

Roadway designation # IH-number, US-number, SH-number, FM-number

WORD OR PHRASE	ABBREVIATION
Major	MAJ
Miles	MI
Miles Per Hour	MPH
Minor	MNR
Monday	MON
Normal	NORM
North	N
Northbound	(route) N
Parking	PKING
Road	RD
Right Lane	RT LN
Saturday	SAT
Service Road	SERV RD
Shoulder	SHLDR
Slippery	SLIP
South	S
Southbound	(route) S
Speed	SPD
Street	ST
Sunday	SUN
Telephone	PHONE
Temporary	TEMP
Thursday	THURS
To Downtown	TO DWNTN
Traffic	TRAF
Travelers	TRVLRS
Tuesday	TUES
Time Minutes	TIME MIN
Upper Level	UPR LEVEL
Vehicles (s)	VEH, VEHS
Warning	WARN
Wednesday	WED
Weight Limit	WT LIMIT
West	W
Westbound	(route) W
Wet Pavement	WET PVMT
Will Not	WONT

RECOMMENDED PHASES AND FORMATS FOR PCMS MESSAGES DURING ROADWORK ACTIVITIES

(The Engineer may approve other messages not specifically covered here.)

Item 2.

Phase 1: Condition Lists

Road/Lane/Ramp Closure List

FREEWAY  
CLOSED  
X MILE

ROAD  
CLOSED  
AT SH XXX

ROAD  
CLSD AT  
FM XXXX

RIGHT X  
LANES  
CLOSED

CENTER  
LANE  
CLOSED

NIGHT  
LANE  
CLOSURES

VARIOUS  
LANES  
CLOSED

EXIT  
CLOSED

MALL  
DRIVEWAY  
CLOSED

XXXXXXXX  
BLVD  
CLOSED

FRONTAGE  
ROAD  
CLOSED

SHOULDER  
CLOSED  
XXX FT

RIGHT LN  
CLOSED  
XXX FT

RIGHT X  
LANES  
OPEN

DAYTIME  
LANE  
CLOSURES

I-XX SOUTH  
EXIT  
CLOSED

EXIT XXX  
CLOSED  
X MILE

RIGHT LN  
TO BE  
CLOSED

X LANES  
CLOSED  
TUE - FRI

Other Condition List

ROADWORK  
XXX FT

LANE  
NARROWS  
XXXX FT

RIGHT LN  
NARROWS  
XXXX FT

MERGING  
TRAFFIC  
XXXX FT

LOOSE  
GRAVEL  
XXXX FT

DETOUR  
X MILE

ROADWORK  
PAST  
SH XXXX

BUMP  
XXXX FT

TRAFFIC  
SIGNAL  
XXXX FT

ROAD  
REPAIRS  
XXXX FT

LANE  
NARROWS  
XXXX FT

TWO-WAY  
TRAFFIC  
XX MILE

CONST  
TRAFFIC  
XXX FT

UNEVEN  
LANES  
XXXX FT

ROUGH  
ROAD  
XXXX FT

ROADWORK  
NEXT  
FRI-SUN

US XXX  
EXIT  
X MILES

LANES  
SHIFT

\* LANES SHIFT in Phase 1 must be used with STAY IN LANE in Phase 2.

APPLICATION GUIDELINES

1. Only 1 or 2 phases are to be used on a PCMS.
2. The 1st phase (or both) should be selected from the "Road/Lane/Ramp Closure List" and the "Other Condition List".
3. A 2nd phase can be selected from the "Action to Take/Effect on Travel, Location, General Warning, or Advance Notice Phase Lists".
4. A Location Phase is necessary only if a distance or location is not included in the first phase selected.
5. If two PCMS are used in sequence, they must be separated by a minimum of 1000 ft. Each PCMS shall be limited to two phases, and should be understandable by themselves.
6. For advance notice, when the current date is within seven days of the actual work date, calendar days should be replaced with days of the week. Advance notification should typically be for no more than one week prior to the work.

PCMS SIGNS WITHIN THE R.O.W. SHALL BE BEHIND GUARDRAIL OR CONCRETE BARRIER OR SHALL HAVE A MINIMUM OF FOUR (4) PLASTIC DRUMS PLACED PERPENDICULAR TO TRAFFIC ON THE UPSTREAM SIDE OF THE PCMS, WHEN EXPOSED TO ONE DIRECTION OF TRAFFIC. WHEN EXPOSED TO TWO WAY TRAFFIC, THE FOUR DRUMS SHOULD BE PLACED WITH ONE DRUM AT EACH OF THE FOUR CORNERS OF THE UNIT.

FULL MATRIX PCMS SIGNS

1. When Full Matrix PCMS signs are used, the character height and legibility/visibility requirements shall be maintained as listed in Note 15 under "PORTABLE CHANGEABLE MESSAGE SIGNS" above.
2. When symbol signs, such as the "Flagger Symbol" (CW20-7) are represented graphically on the Full Matrix PCMS sign and, with the approval of the Engineer, it shall maintain the legibility/visibility requirement listed above.
3. When symbol signs are represented graphically on the Full Matrix PCMS, they shall only supplement the use of the static sign represented, and shall not substitute for, or replace that sign.
4. A full matrix PCMS may be used to simulate a flashing arrow board provided it meets the visibility, flash rate and dimming requirements on BC(7), for the same size arrow.

Phase 2: Possible Component Lists

Action to Take/Effect on Travel List

MERGE  
RIGHT

DETOUR  
NEXT  
X EXITS

USE  
EXIT XXX

STAY ON  
US XXX  
SOUTH

TRUCKS  
USE  
US XXX N

WATCH  
FOR  
TRUCKS

EXPECT  
DELAYS

REDUCE  
SPEED  
XXX FT

USE  
OTHER  
ROUTES

STAY  
IN  
LANE

FORM  
X LINES  
RIGHT

USE  
XXXXX  
RD EXIT

USE EXIT  
I-XX  
NORTH

USE  
I-XX E  
TO I-XX N

WATCH  
FOR  
TRUCKS

EXPECT  
DELAYS

PREPARE  
TO  
STOP

END  
SHOULDER  
USE

WATCH  
FOR  
WORKERS

Location List

AT  
FM XXXX

BEFORE  
RAILROAD  
CROSSING

NEXT  
X  
MILES

PAST  
US XXX  
EXIT

XXXXXXXX  
TO  
XXXXXXXX

US XXX  
TO  
FM XXXX

Warning List

SPEED  
LIMIT  
XX MPH

MAXIMUM  
SPEED  
XX MPH

MINIMUM  
SPEED  
XX MPH

ADVISORY  
SPEED  
XX MPH

RIGHT  
LANE  
EXIT

USE  
CAUTION

DRIVE  
SAFELY

DRIVE  
WITH  
CARE

\*\* Advance Notice List

TUE-FRI  
XX AM-  
X PM

APR XX-  
XX  
X PM-X AM

BEGINS  
MONDAY

BEGINS  
MAY XX

MAY X-X  
XX PM -  
XX AM

NEXT  
FRI-SUN

XX AM  
TO  
XX PM

NEXT  
TUE  
AUG XX

TONIGHT  
XX PM-  
XX AM

\*\* See Application Guidelines Note 6.

SHEET 6 OF 12



Texas Department of Transportation

Traffic  
Safety  
Division  
Standard

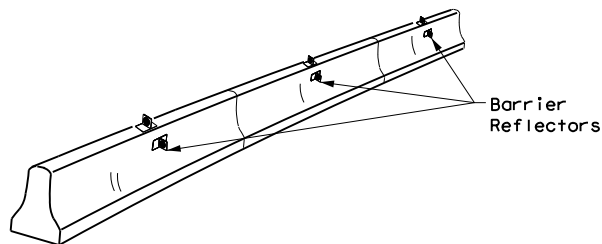
BARRICADE AND CONSTRUCTION  
PORTABLE CHANGEABLE  
MESSAGE SIGN (PCMS)

BC (6) - 21

FILE:	bc-21.dgn	DN:	TxDOT	CK:	TxDOT	DW:	TxDOT	CK:	TxDOT
© TxDOT	November 2002	CONT	SECT	JOB	REVISIONS	DATE	BY	CHKD	DATE
9-07	8-14								
7-13	5-21								

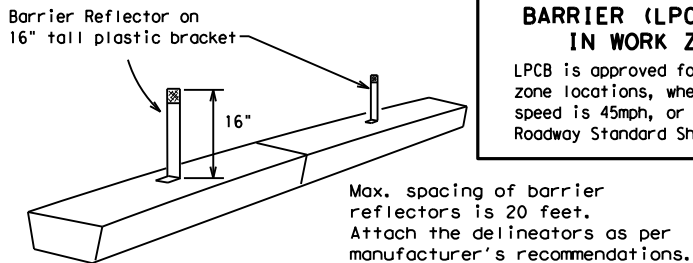
DISCLAIMER: The use of this standard is governed by the "Texas Engineering Practice Act". No warranty of any kind is made by TxDOT for any purpose whatsoever. TxDOT assumes no responsibility for the conversion of this standard to other formats or for incorrect results or damages resulting from its use.

- Barrier Reflectors shall be pre-qualified, and conform to the color and reflectivity requirements of DMS-8600. A list of prequalified Barrier Reflectors can be found at the Material Producer List web address shown on BC(1).
- Color of Barrier Reflectors shall be as specified in the TMUTCD. The cost of the reflectors shall be considered subsidiary to Item 512.

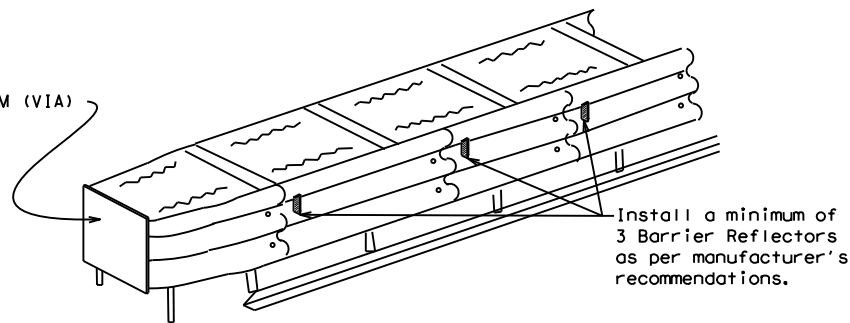


#### CONCRETE TRAFFIC BARRIER (CTB)

- Where traffic is on one side of the CTB, two (2) Barrier Reflectors shall be mounted in approximately the midsection of each section of CTB. An alternate mounting location is uniformly spaced at one end of each CTB. This will allow for attachment of a barrier grapple without damaging the reflector. The Barrier Reflector mounted on the side of the CTB shall be located directly below the reflector mounted on top of the barrier, as shown in the detail above.
- Where CTB separates two-way traffic, three barrier reflectors shall be mounted on each section of CTB. The reflector unit on top shall have two yellow reflective faces (Bi-Directional) while the reflectors on each side of the barrier shall have one yellow reflective face, as shown in the detail above.
- When CTB separates traffic traveling in the same direction, no barrier reflectors will be required on top of the CTB.
- Barrier Reflector units shall be yellow or white in color to match the edgeline being supplemented.
- Maximum spacing of Barrier Reflectors is forty (40) feet.
- Pavement markers or temporary flexible-reflective roadway marker tabs shall NOT be used as CTB delineation.
- Attachment of Barrier Reflectors to CTB shall be per manufacturer's recommendations.
- Missing or damaged Barrier Reflectors shall be replaced as directed by the Engineer.
- Single slope barriers shall be delineated as shown on the above detail.



#### LOW PROFILE CONCRETE BARRIER (LPCB)



#### DELINEATION OF END TREATMENTS

##### END TREATMENTS FOR CTB'S USED IN WORK ZONES

End treatments used on CTB's in work zones shall meet the appropriate crashworthy standards as defined in the Manual for Assessing Safety Hardware (MASH). Refer to the CWZTCD List for approved end treatments and manufacturers.

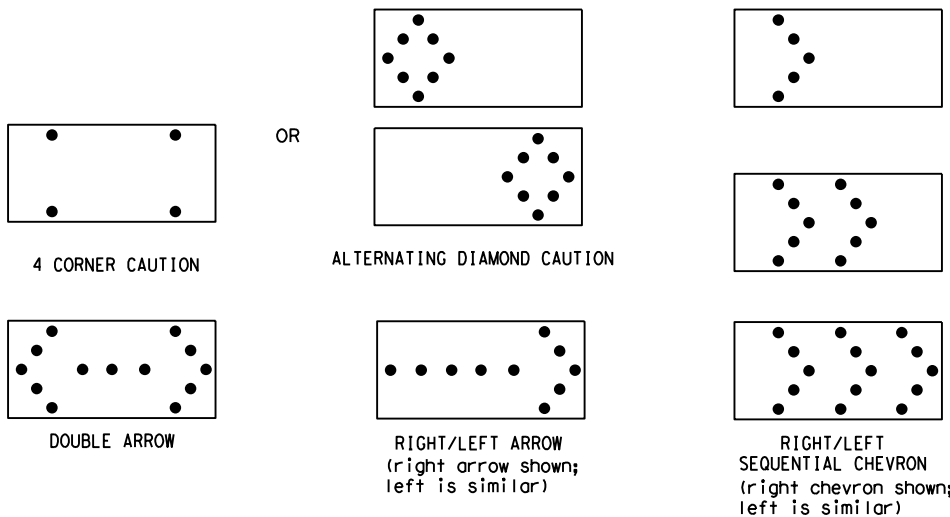
#### LOW PROFILE CONCRETE BARRIER (LPCB) USED IN WORK ZONES

LPCB is approved for use in work zone locations, where the posted speed is 45mph, or less. See Roadway Standard Sheet LPCB.

Arrow Boards may be located behind channelizing devices in place for a shoulder taper or merging taper, otherwise they shall be delineated with four (4) channelizing devices placed perpendicular to traffic on the upstream side of traffic.

Item 2.

- The Flashing Arrow Board should be used for all lane closures on multi-lane roadways, or slow moving maintenance or construction activities on the travel lanes.
- Flashing Arrow Boards should not be used on two-lane, two-way roadways, detours, diversions or work on shoulders unless the "CAUTION" display (see detail below) is used.
- The Engineer/Inspector shall choose all appropriate signs, barricades and/or other traffic control devices that should be used in conjunction with the Flashing Arrow Board.
- The Flashing Arrow Board should be able to display the following symbols:



- The "CAUTION" display consists of four corner lamps flashing simultaneously, or the Alternating Diamond Caution mode as shown.
- The straight line caution display is NOT ALLOWED.
- The Flashing Arrow Board shall be capable of minimum 50 percent dimming from rated lamp voltage. The flashing rate of the lamps shall not be less than 25 nor more than 40 flashes per minute.
- Minimum lamp "on time" shall be approximately 50 percent for the flashing arrow and equal intervals of 25 percent for each sequential phase of the flashing chevron.
- The sequential arrow display is NOT ALLOWED.
- The flashing arrow display is the TxDOT standard; however, the sequential chevron display may be used during daylight operations.
- The Flashing Arrow Board shall be mounted on a vehicle, trailer or other suitable support.
- A Flashing Arrow Board SHALL NOT BE USED to laterally shift traffic.
- A full matrix PCMS may be used to simulate a Flashing Arrow Board provided it meets visibility, flash rate and dimming requirements on this sheet for the same size arrow.
- Minimum mounting height of trailer mounted Arrow Boards should be 7 feet from roadway to bottom of panel.

#### REQUIREMENTS

TYPE	MINIMUM SIZE	MINIMUM NUMBER OF PANEL LAMPS	MINIMUM VISIBILITY DISTANCE
B	30 x 60	13	3/4 mile
C	48 x 96	15	1 mile

#### ATTENTION

Flashing Arrow Boards shall be equipped with automatic dimming devices.

WHEN NOT IN USE, REMOVE THE ARROW BOARD FROM THE RIGHT-OF-WAY OR PLACE THE ARROW BOARD BEHIND CONCRETE TRAFFIC BARRIER OR GUARDRAIL.

## FLASHING ARROW BOARDS

SHEET 7 OF 12

#### TRUCK-MOUNTED ATTENUATORS

- Truck-mounted attenuators (TMA) used on TxDOT facilities must meet the requirements outlined in the Manual for Assessing Safety Hardware (MASH).
- Refer to the CWZTCD for the requirements of Level 2 or Level 3 TMAs.
- Refer to the CWZTCD for a list of approved TMAs.
- TMAs are required on freeways unless otherwise noted in the plans.
- A TMA should be used anytime that it can be positioned 30 to 100 feet in advance of the area of crew exposure without adversely affecting the work performance.
- The only reason a TMA should not be required is when a work area is spread down the roadway and the work crew is an extended distance from the TMA.



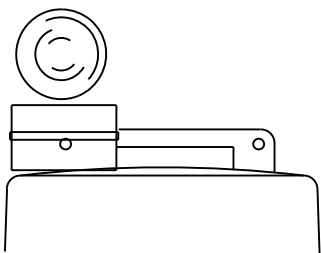
## BARRICADE AND CONSTRUCTION ARROW PANEL, REFLECTORS, WARNING LIGHTS & ATTENUATOR

BC(7)-21

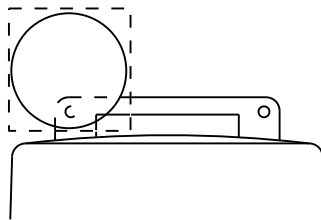
FILE:	bc-21.dgn	DN:	TxDOT	CK:	TxDOT	OW:	TxDOT	CK:	TxDOT
© TxDOT	November 2002	CONT	SECT	JOB	HIGHWAY				
REVISIONS									
9-07	8-14								
7-13	5-21								
		DIST		COUNTY					

22

101



Type C Warning Light or approved substitute mounted on a drum adjacent to the travel way.



Warning reflector may be round or square. Must have a yellow reflective surface area of at least 30 square inches

#### WARNING LIGHTS

- Warning lights shall meet the requirements of the TMUTCD.
- Warning lights shall NOT be installed on barricades.
- Type A-Low Intensity Flashing Warning Lights are commonly used with drums. They are intended to warn of or mark a potentially hazardous area. Their use shall be as indicated on this sheet and/or other sheets of the plans by the designation "FL". The Type A Warning Lights shall not be used with signs manufactured with Type B<sub>FL</sub> or C<sub>FL</sub> Sheeting meeting the requirements of Departmental Material Specification DMS-8300.
- Type-C and Type D 360 degree Steady Burn Lights are intended to be used in a series for delineation to supplement other traffic control devices. Their use shall be as indicated on this sheet and/or other sheets of the plans by the designation "SB".
- The Engineer/Inspector or the plans shall specify the location and type of warning lights to be installed on the traffic control devices.
- When required by the Engineer, the Contractor shall furnish a copy of the warning lights certification. The warning light manufacturer will certify the warning lights meet the requirements of the latest ITE Purchase Specifications for Flashing and Steady-Burn Warning Lights.
- When used to delineate curves, Type-C and Type D Steady Burn Lights should only be placed on the outside of the curve, not the inside.
- The location of warning lights and warning reflectors on drums shall be as shown elsewhere in the plans.

#### WARNING LIGHTS MOUNTED ON PLASTIC DRUMS

- Type A flashing warning lights are intended to warn drivers that they are approaching or are in a potentially hazardous area.
- Type A random flashing warning lights are not intended for delineation and shall not be used in a series.
- A series of sequential flashing warning lights placed on channelizing devices to form a merging taper may be used for delineation. If used, the successive flashing of the sequential warning lights should occur from the beginning of the taper to the end of the merging taper in order to identify the desired vehicle path. The rate of flashing for each light shall be 65 flashes per minute, plus or minus 10 flashes.
- Type C and D steady-burn warning lights are intended to be used in a series to delineate the edge of the travel lane on detours, on lane changes, on lane closures, and on other similar conditions.
- Type A, Type C and Type D warning lights shall be installed at locations as detailed on other sheets in the plans.
- Warning lights shall not be installed on a drum that has a sign, chevron or vertical panel.
- The maximum spacing for warning lights on drums should be identical to the channelizing device spacing.

#### WARNING REFLECTORS MOUNTED ON PLASTIC DRUMS AS A SUBSTITUTE FOR TYPE C (STEADY BURN) WARNING LIGHTS

- A warning reflector or approved substitute may be mounted on a plastic drum as a substitute for a Type C, steady burn warning light at the discretion of the Contractor unless otherwise noted in the plans.
- The warning reflector shall be yellow in color and shall be manufactured using a sign substrate approved for use with plastic drums listed on the CWZTCD.
- The warning reflector shall have a minimum retroreflective surface area (one-side) of 30 square inches.
- Round reflectors shall be fully reflectorized, including the area where attached to the drum.
- Square substrates must have a minimum of 30 square inches of reflectorized sheeting. They do not have to be reflectorized where it attaches to the drum.
- The side of the warning reflector facing approaching traffic shall have sheeting meeting the color and retroreflectivity requirements for DMS 8300-Type B or Type C.
- When used near two-way traffic, both sides of the warning reflector shall be reflectorized.
- The warning reflector should be mounted on the side of the handle nearest approaching traffic.
- The maximum spacing for warning reflectors should be identical to the channelizing device spacing requirements.



DISCLAIMER: The use of this standard is governed by the "Texas Engineering Practice Act". No warranty of any kind is made by TxDOT for any purpose whatsoever. TxDOT assumes no responsibility for the conversion of this standard to other formats or for incorrect results or damages resulting from its use.

DATE:  
FILE:

GENERAL NOTES

- For long term stationary work zones on freeways, drums shall be used as the primary channelizing device.
- For intermediate term stationary work zones on freeways, drums should be used as the primary channelizing device but may be replaced in tangent sections by vertical panels, or 42" two-piece cones. In tangent sections, one-piece cones may be used with the approval of the Engineer but only if personnel are present on the project at all times to maintain the cones in proper position and location.
- For short term stationary work zones on freeways, drums are the preferred channelizing device but may be replaced in tapers, transitions and tangent sections by vertical panels, two-piece cones or one-piece cones as approved by the Engineer.
- Drums and all related items shall comply with the requirements of the current version of the "Texas Manual on Uniform Traffic Control Devices" (TMUTCD) and the "Compliant Work Zone Traffic Control Devices List" (CWZTCD).
- Drums, bases, and related materials shall exhibit good workmanship and shall be free from objectionable marks or defects that would adversely affect their appearance or serviceability.
- The Contractor shall have a maximum of 24 hours to replace any plastic drums identified for replacement by the Engineer/Inspector. The replacement device must be an approved device.

GENERAL DESIGN REQUIREMENTS

Pre-qualified plastic drums shall meet the following requirements:

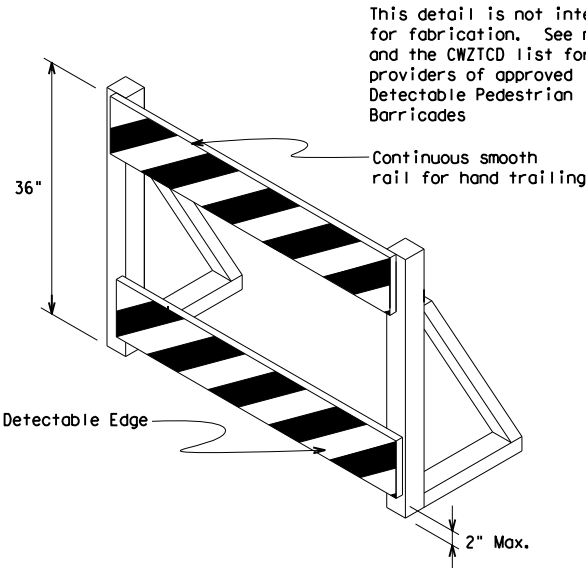
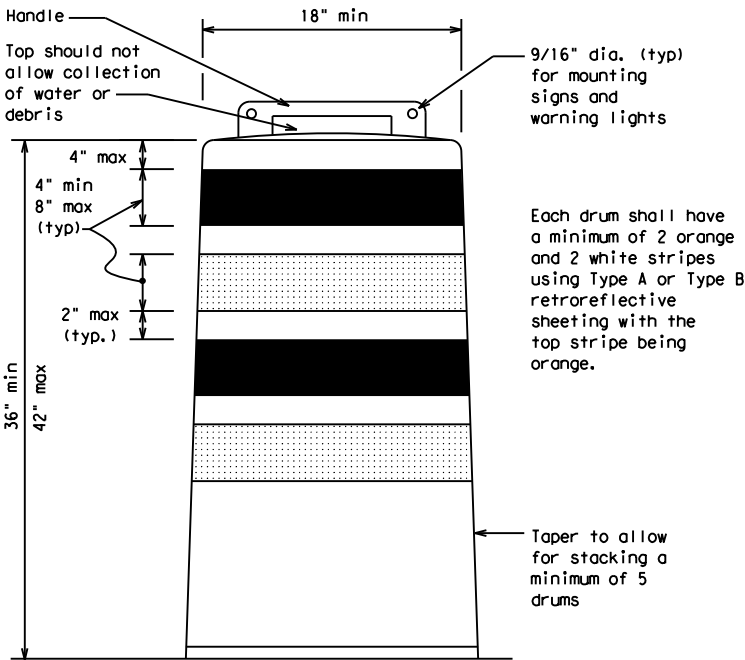
- Plastic drums shall be a two-piece design; the "body" of the drum shall be the top portion and the "base" shall be the bottom.
- The body and base shall lock together in such a manner that the body separates from the base when impacted by a vehicle traveling at a speed of 20 MPH or greater but prevents accidental separation due to normal handling and/or air turbulence created by passing vehicles.
- Plastic drums shall be constructed of lightweight flexible, and deformable materials. The Contractor shall NOT use metal drums or single piece plastic drums as channelization devices or sign supports.
- Drums shall present a profile that is a minimum of 18 inches in width at the 36 inch height when viewed from any direction. The height of drum unit (body installed on base) shall be a minimum of 36 inches and a maximum of 42 inches.
- The top of the drum shall have a built-in handle for easy pickup and shall be designed to drain water and not collect debris. The handle shall have a minimum of two widely spaced 9/16 inch diameter holes to allow attachment of a warning light, warning reflector unit or approved compliant sign.
- The exterior of the drum body shall have a minimum of four alternating orange and white retroreflective circumferential stripes not less than 4 inches nor greater than 8 inches in width. Any non-reflectorized space between any two adjacent stripes shall not exceed 2 inches in width.
- Bases shall have a maximum width of 36 inches, a maximum height of 4 inches, and a minimum of two footholds of sufficient size to allow base to be held down while separating the drum body from the base.
- Plastic drums shall be constructed of ultra-violet stabilized, orange, high-density polyethylene (HDPE) or other approved material.
- Drum body shall have a maximum unballasted weight of 11 lbs.
- Drum and base shall be marked with manufacturer's name and model number.

RETROREFLECTIVE SHEETING

- The stripes used on drums shall be constructed of sheeting meeting the color and retroreflectivity requirements of Departmental Materials Specification DMS-8300, "Sign Face Materials." Type A or Type B reflective sheeting shall be supplied unless otherwise specified in the plans.
- The sheeting shall be suitable for use on and shall adhere to the drum surface such that, upon vehicular impact, the sheeting shall remain adhered in-place and exhibit no delaminating, cracking, or loss of retroreflectivity other than that loss due to abrasion of the sheeting surface.

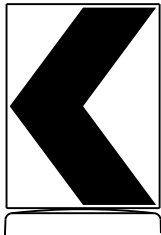
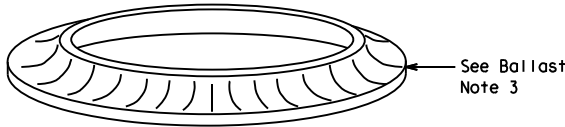
BALLAST

- Unballasted bases shall be large enough to hold up to 50 lbs. of sand. This base, when filled with the ballast material, should weigh between 35 lbs (minimum) and 50 lbs (maximum). The ballast may be sand in one to three sandbags separate from the base, sand in a sand-filled plastic base, or other ballasting devices as approved by the Engineer. Stacking of sandbags will be allowed, however height of sandbags above pavement surface may not exceed 12 inches.
- Bases with built-in ballast shall weigh between 40 lbs. and 50 lbs. Built-in ballast can be constructed of an integral crumb rubber base or a solid rubber base.
- Recycled truck tire sidewalls may be used for ballast on drums approved for this type of ballast on the CWZTCD list.
- The ballast shall not be heavy objects, water, or any material that would become hazardous to motorists, pedestrians, or workers when the drum is struck by a vehicle.
- When used in regions susceptible to freezing, drums shall have drainage holes in the bottoms so that water will not collect and freeze becoming a hazard when struck by a vehicle.
- Ballast shall not be placed on top of drums.
- Adhesives may be used to secure base of drums to pavement.

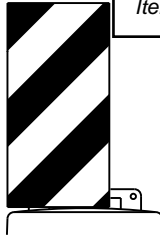


DETECTABLE PEDESTRIAN BARRICADES

- When existing pedestrian facilities are disrupted, closed, or relocated in a TTC zone, the temporary facilities shall be detectable and include accessibility features consistent with the features present in the existing pedestrian facility. Refer to WZ(BTS-2) for Pedestrian Control requirements for Sidewalk Diversions, Sidewalk Detours and Crosswalk Closures.
- Where pedestrians with visual disabilities normally use the closed sidewalk, a Detectable Pedestrian Barricade shall be placed across the full width of the closed sidewalk instead of a Type 3 Barricade.
- Detectable pedestrian barricades similar to the one pictured above, longitudinal channelizing devices, some concrete barriers, and wood or chain link fencing with a continuous detectable edging can satisfactorily delineate a pedestrian path.
- Tape, rope, or plastic chain strung between devices are not detectable, do not comply with the design standards in the "Americans with Disabilities Act Accessibility Guidelines (ADAAG)" and should not be used as a control for pedestrian movements.
- Warning lights shall not be attached to detectable pedestrian barricades.
- Detectable pedestrian barricades should use 8" nominal barricade rails as shown on BC(10) provided that the top rail provides a smooth continuous rail suitable for hand trailing with no splinters, burrs, or sharp edges.



18" x 24" Sign  
(Maximum Sign Dimension)  
Chevron CWI-8, Opposing Traffic Lane Divider, Driveway sign D70a, Keep Right R4 series or other signs as approved by Engineer



Item 2.

Plywood, Aluminum or Metal sign substrates shall NOT be used on plastic drums

SIGNS, CHEVRONS, AND VERTICAL PANELS MOUNTED ON PLASTIC DRUMS

- Signs used on plastic drums shall be manufactured using substrates listed on the CWZTCD.
- Chevrons and other work zone signs with an orange background shall be manufactured with Type B<sub>FL</sub> or Type C<sub>FL</sub> Orange sheeting meeting the color and retroreflectivity requirements of DMS-8300, "Sign Face Material," unless otherwise specified in the plans.
- Vertical Panels shall be manufactured with orange and white sheeting meeting the requirements of DMS-8300 Type A or Type B. Diagonal stripes on Vertical Panels shall slope down toward the intended traveled lane.
- Other sign messages (text or symbolic) may be used as approved by the Engineer. Sign dimensions shall not exceed 18 inches in width or 24 inches in height, except for the R9 series signs discussed in note 8 below.
- Signs shall be installed using a 1/2 inch bolt (nominal) and nut, two washers, and one locking washer for each connection.
- Mounting bolts and nuts shall be fully engaged and adequately torqued. Bolts should not extend more than 1/2 inch beyond nuts.
- Chevrons may be placed on drums on the outside of curves, on merging tapers or on shifting tapers. When used in these locations, they may be placed on every drum or spaced not more than on every third drum. A minimum of three (3) should be used at each location called for in the plans.
- R9-9, R9-10, R9-11 and R9-11a Sidewalk Closed signs which are 24 inches wide may be mounted on plastic drums, with approval of the Engineer.

SHEET 8 OF 12



Texas Department of Transportation

Traffic Safety Division Standard

BARRICADE AND CONSTRUCTION CHANNELIZING DEVICES

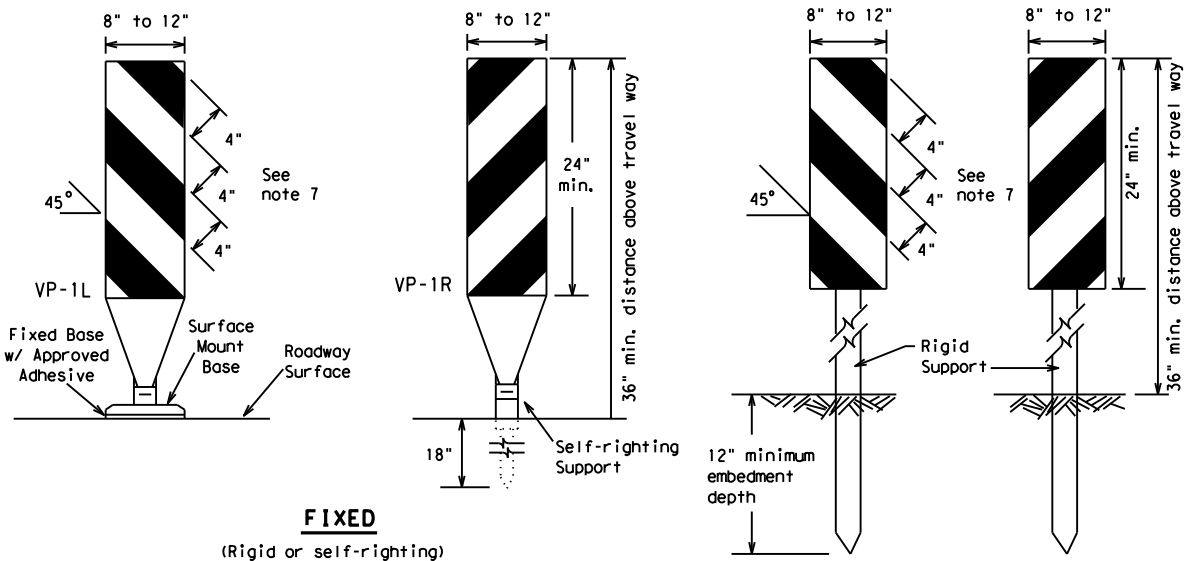
BC(8) - 21

FILE:	bc-21.dgn	DN:	TxDOT	CK:	TxDOT	DW:	TxDOT	CK:	TxDOT
© TxDOT	November 2002	CONT	SECT	JOB	HIGHWAY				
4-03	8-14								
9-07	5-21								
7-13									
		DIST		COUNTY					

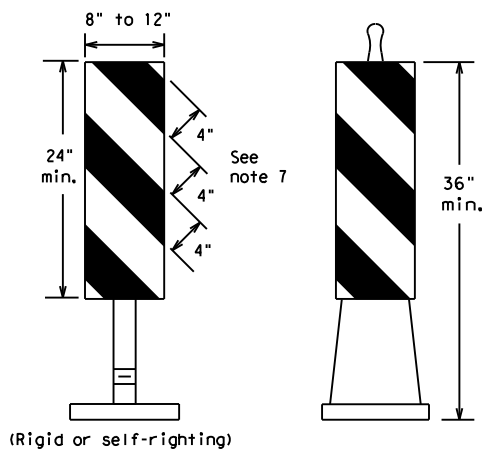
23

DISCLAIMER: The use of this standard is governed by the "Texas Engineering Practice Act". No warranty of any kind is made by TxDOT for any purpose whatsoever. TxDOT assumes no responsibility for the conversion of this standard to other formats or for incorrect results or damages resulting from its use.

DATE:  
FILE:



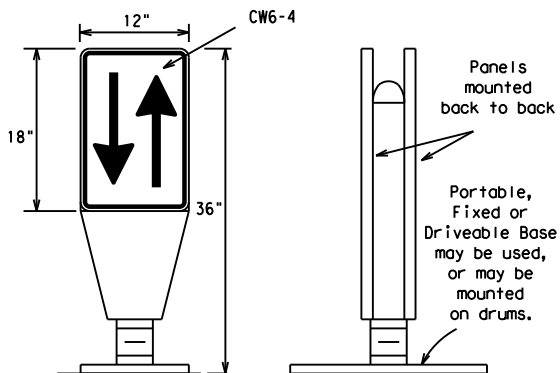
**FIXED**  
(Rigid or self-righting)



**PORTABLE**

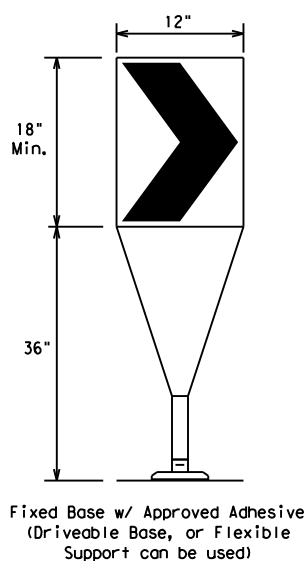
### VERTICAL PANELS (VPs)

1. Vertical Panels (VP's) are normally used to channelize traffic or divide opposing lanes of traffic.
2. VP's may be used in daytime or nighttime situations. They may be used at the edge of shoulder drop-offs and other areas such as lane transitions where positive daytime and nighttime delineation is required. The Engineer/Inspector shall refer to the Roadway Design Manual for additional requirements on the use VP's for drop-offs.
3. VP's should be mounted back to back if used at the edge of cuts adjacent to two-way two lane roadways. Stripes are to be reflective orange and reflective white and should always slope downward toward the travel lane.
4. VP's used on expressways and freeways or other high speed roadways, may have more than 270 square inches of retroreflective area facing traffic.
5. Self-righting supports are available with portable base. See "Compliant Work Zone Traffic Control Devices List" (CWZTCD).
6. Sheeting for the VP's shall be retroreflective Type A or Type B conforming to Departmental Material Specification DMS-8300, unless noted otherwise.
7. Where the height of reflective material on the vertical panel is 36 inches or greater, a panel stripe of 6 inches shall be used.



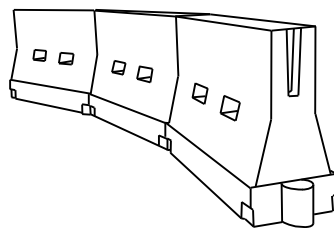
### OPPOSING TRAFFIC LANE DIVIDERS (OTLD)

1. Opposing Traffic Lane Dividers (OTLD) are delineation devices designed to convert a normal one-way roadway section to two-way operation. OTLD's are used on temporary centerlines. The upward and downward arrows on the sign's face indicate the direction of traffic on either side of the divider. The base is secured to the pavement with an adhesive or rubber weight to minimize movement caused by a vehicle impact or wind gust.
2. The OTLD may be used in combination with 42" cones or VPs.
3. Spacing between the OTLD shall not exceed 500 feet. 42" cones or VPs placed between the OTLD's should not exceed 100 foot spacing.
4. The OTLD shall be orange with a black non-reflective legend. Sheeting for the OTLD shall be retroreflective Type B<sub>FL</sub> or Type C<sub>FL</sub> conforming to Departmental Material Specification DMS-8300, unless noted otherwise. The legend shall meet the requirements of DMS-8300.



1. The chevron shall be a vertical rectangle with a minimum size of 12 by 18 inches.
2. Chevrons are intended to give notice of a sharp change of alignment with the direction of travel and provide additional emphasis and guidance for vehicle operators with regard to changes in horizontal alignment of the roadway.
3. Chevrons, when used, shall be erected on the outside of a sharp curve or turn, or on the far side of an intersection. They shall be in line with and at right angles to approaching traffic. Spacing should be such that the motorist always has three in view, until the change in alignment eliminates its need.
4. To be effective, the chevron should be visible for at least 500 feet.
5. Chevrons shall be orange with a black nonreflective legend. Sheeting for the chevron shall be retroreflective Type B<sub>FL</sub> or Type C<sub>FL</sub> conforming to Departmental Material Specification DMS-8300, unless noted otherwise. The legend shall meet the requirements of DMS-8300.
6. For Long Term Stationary use on tapers or transitions on freeways and divided highways, self-righting chevrons may be used to supplement plastic drums but not to replace plastic drums.

### CHEVRONS



### LONGITUDINAL CHANNELIZING DEVICES (LCD)

1. LCDs are crashworthy, lightweight, deformable devices that are highly visible, have good target value and can be connected together. They are not designed to contain or redirect a vehicle on impact.
2. LCDs may be used instead of a line of cones or drums.
3. LCDs shall be placed in accordance to application and installation requirements specific to the device, and used only when shown on the CWZTCD list.
4. LCDs should not be used to provide positive protection for obstacles, pedestrians or workers.
5. LCDs shall be supplemented with retroreflective delineation as required for temporary barriers on BC(7) when placed roughly parallel to the travel lanes.
6. LCDs used as barricades placed perpendicular to traffic should have at least one row of reflective sheeting meeting the requirements for barricade rails as shown on BC(10). Place reflective sheeting near the top of the LCD along the full length of the device.

### WATER BALLASTED SYSTEMS USED AS BARRIERS

1. Water ballasted systems used as barriers shall not be used solely to channelize road users, but also to protect the work space per the appropriate Manual for Assessing Safety Hardware (MASH) crashworthiness requirements based on roadway speed and barrier application.
2. Water ballasted systems used to channelize vehicular traffic shall be supplemented with retroreflective delineation or channelizing devices to improve daytime/nighttime visibility. They may also be supplemented with pavement markings.
3. Water ballasted systems used as barriers shall be placed in accordance to application and installation requirements specific to the device, and used only when shown on the CWZTCD list.
4. Water ballasted systems used as barriers should not be used for a merging taper except in low speed (less than 45 MPH) urban areas. When used on a taper in a low speed urban area, the taper shall be delineated and the taper length should be designed to optimize road user operations considering the available geometric conditions.
5. When water ballasted systems used as barriers have blunt ends exposed to traffic, they should be attenuated as per manufacturer recommendations or flared to a point outside the clear zone.

If used to channelize pedestrians, longitudinal channelizing devices or water ballasted systems must have a continuous detectable bottom for users of long canes and the top of the unit shall not be less than 32 inches in height.

### HOLLOW OR WATER BALLASTED SYSTEMS USED AS LONGITUDINAL CHANNELIZING DEVICES OR BARRIERS

### GENERAL NOTES

1. Work Zone channelizing devices illustrated on this sheet may be installed in close proximity to traffic and are suitable for use on high or low speed roadways. The Engineer/Inspector shall ensure that spacing and placement is uniform and in accordance with the "Texas Manual on Uniform Traffic Control Devices" (TMUTCD).
2. Channelizing devices shown on this sheet may have a driveable, fixed or portable base. The requirement for self-righting channelizing devices must be specified in the General Notes or other plan sheets.
3. Channelizing devices on self-righting supports should be used in work zone areas where channelizing devices are frequently impacted by errant vehicles or vehicle related wind gusts making alignment of the channelizing devices difficult to maintain. Locations of these devices shall be detailed elsewhere in the plans. These devices shall conform to the TMUTCD and the "Compliant Work Zone Traffic Control Devices List" (CWZTCD).
4. The Contractor shall maintain devices in a clean condition and replace damaged, nonreflective, faded, or broken devices and bases as required by the Engineer/Inspector. The Contractor shall be required to maintain proper device spacing and alignment.
5. Portable bases shall be fabricated from virgin and/or recycled rubber. The portable bases shall weigh a minimum of 30 lbs.
6. Pavement surfaces shall be prepared in a manner that ensures proper bonding between the adhesives, the fixed mount bases and the pavement surface. Adhesives shall be prepared and applied according to the manufacturer's recommendations.
7. The installation and removal of channelizing devices shall not cause detrimental effects to the final pavement surfaces, including pavement surface discoloration or surface integrity. Driveable bases shall not be permitted on final pavement surfaces. The Engineer/Inspector shall approve all application and removal procedures of fixed bases.

Posted Speed	Formula	Minimum Desirable Taper Lengths **			Suggested Maximum Spacing of Channelizing Devices	
		10' Offset	11' Offset	12' Offset	On a Taper	On a Tangent
30	$L = \frac{WS^2}{60}$	150'	165'	180'	30'	60'
35		205'	225'	245'	35'	70'
40		265'	295'	320'	40'	80'
45	L = WS	450'	495'	540'	45'	90'
50		500'	550'	600'	50'	100'
55		550'	605'	660'	55'	110'
60		600'	660'	720'	60'	120'
65		650'	715'	780'	65'	130'
70		700'	770'	840'	70'	140'
75		750'	825'	900'	75'	150'
80		800'	880'	960'	80'	160'

\*\*Taper lengths have been rounded off.  
L=Length of Taper (FT.) W=Width of Offset (FT.)  
S=Posted Speed (MPH)

### SUGGESTED MAXIMUM SPACING OF CHANNELIZING DEVICES AND MINIMUM DESIRABLE TAPER LENGTHS

SHEET 9 OF 12



## BARRICADE AND CONSTRUCTION CHANNELIZING DEVICES

### BC (9) - 21

FILE:	bc-21.dgn	DN:	TxDOT	CK:	TxDOT	DW:	TxDOT	CK:	TxDOT
© TxDOT	November 2002	CONT	SECT	JOB	HIGHWAY				
REVISIONS									
9-07	8-14								
7-13	5-21								
		DIST		COUNTY					



DISCLAIMER: The use of this standard is governed by the "Texas Engineering Practice Act". No warranty of any kind is made by TxDOT for any purpose whatsoever. TxDOT assumes no responsibility for the conversion of this standard to other formats or for incorrect results or damages resulting from its use.

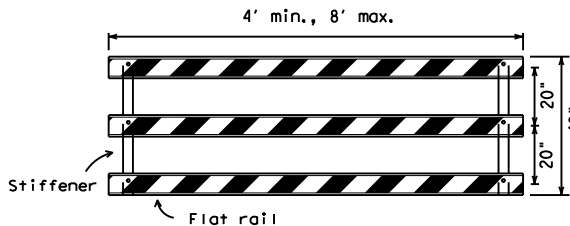
TYPE 3 BARRICADES

1. Refer to the Compliant Work Zone Traffic Control Devices List (CWZTCD) for details of the Type 3 Barricades and a list of all materials used in the construction of Type 3 Barricades.
2. Type 3 Barricades shall be used at each end of construction projects closed to all traffic.
3. Barricades extending across a roadway should have stripes that slope downward in the direction toward which traffic must turn in detouring. When both right and left turns are provided, the chevron striping may slope downward in both directions from the center of the barricade. Where no turns are provided at a closed road, striping should slope downward in both directions toward the center of roadway.
4. Striping of rails, for the right side of the roadway, should slope downward to the left. For the left side of the roadway, striping should slope downward to the right.
5. Identification markings may be shown only on the back of the barricade rails. The maximum height of letters and/or company logos used for identification shall be 1".
6. Barricades shall not be placed parallel to traffic unless an adequate clear zone is provided.
7. Warning lights shall NOT be installed on barricades.
8. Where barricades require the use of weights to keep from turning over, the use of sandbags with dry, cohesionless sand is recommended. The sandbags will be tied shut to keep the sand from spilling and to maintain a constant weight. Sand bags shall not be stacked in a manner that covers any portion of a barricade rails reflective sheeting. Rock, concrete, iron, steel or other solid objects will NOT be permitted. Sandbags should weigh a minimum of 35 lbs and a maximum of 50 lbs. Sandbags shall be made of a durable material that tears upon vehicular impact. Rubber (such as tire inner tubes) shall not be used for sandbags. Sandbags shall only be placed along or upon the base supports of the device and shall not be suspended above ground level or hung with rope, wire, chains or other fasteners.
9. Sheeting for barricades shall be retroreflective Type A or Type B conforming to Departmental Material Specification DMS-8300 unless otherwise noted.

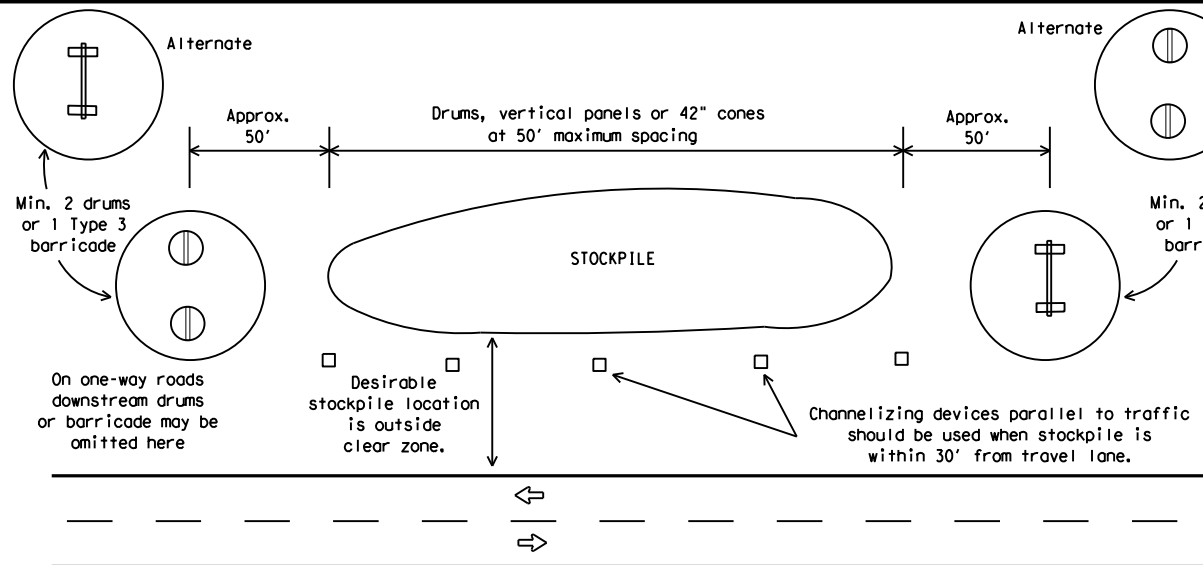
Barricades shall NOT be used as a sign support.



TYPICAL STRIPING DETAIL FOR BARRICADE RAIL

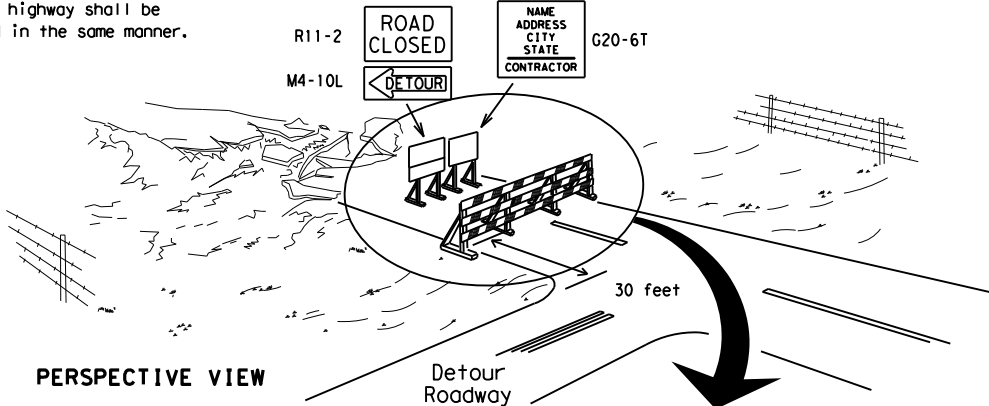


TYPICAL PANEL DETAIL FOR SKID OR POST TYPE BARRICADES



TRAFFIC CONTROL FOR MATERIAL STOCKPILES

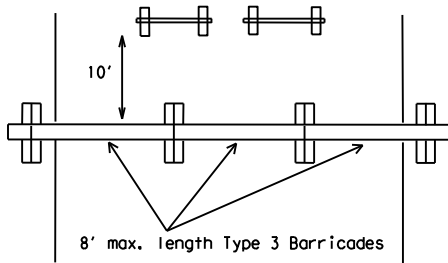
Each roadway of a divided highway shall be barricaded in the same manner.



PERSPECTIVE VIEW

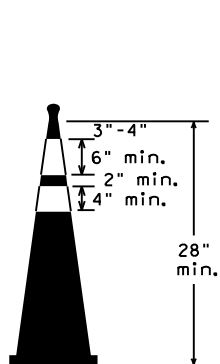
The three rails on Type 3 barricades shall be reflectorized orange and reflective white stripes on one side facing one-way traffic and both sides for two-way traffic. Barricade striping should slant downward in the direction of detour.

1. Signs should be mounted on independent supports at a 7 foot mounting height in center of roadway. The signs should be a minimum of 10 feet behind Type 3 Barricades.
2. Advance signing shall be as specified elsewhere in the plans.

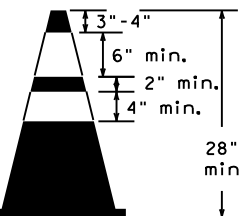
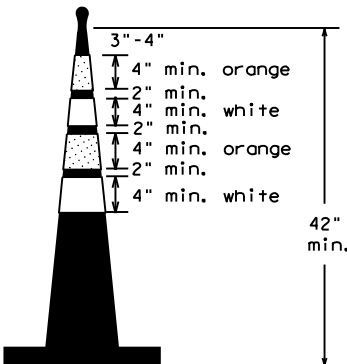


PLAN VIEW

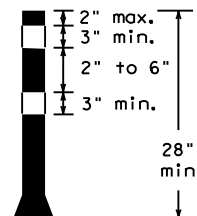
TYPE 3 BARRICADE (POST AND SKID) TYPICAL APPLICATION



Two-Piece cones



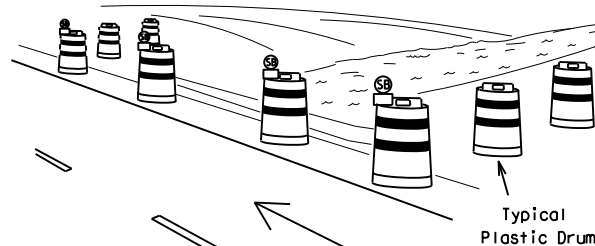
One-Piece cones



Tubular Marker

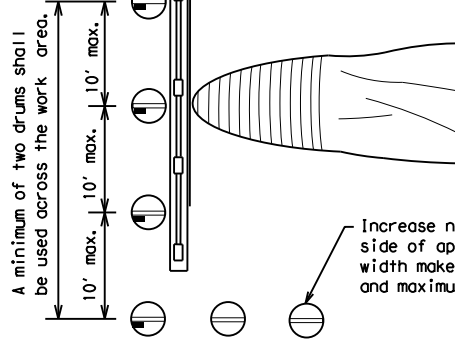
28" Cones shall have a minimum weight of 9 1/2 lbs.  
42" 2-piece cones shall have a minimum weight of 30 lbs. including base.

1. Traffic cones and tubular markers shall be predominantly orange, and meet the height and weight requirements shown above.
2. One-piece cones have the body and base of the cone molded in one consolidated unit. Two-piece cones have a cone shaped body and a separate rubber base, or ballast, that is added to keep the device upright and in place.
3. Two-piece cones may have a handle or loop extending up to 8" above the minimum height shown, in order to aid in retrieving the device.
4. Cones or tubular markers shall have white or white and orange reflective bands as shown above. The reflective bands shall have a smooth, sealed outer surface and meet the requirements of Departmental Material Specification DMS-8300 Type A or Type B.
5. 28" cones and tubular markers are generally suitable for short duration and short-term stationary work as defined on BC(4). These should not be used for intermediate-term or long-term stationary work unless personnel is on-site to maintain them in their proper upright position.
6. 42" two-piece cones, vertical panels or drums are suitable for all work zone durations.
7. Cones or tubular markers used on each project should be of the same size and shape.



PERSPECTIVE VIEW

These drums are not required on one-way roadway



PLAN VIEW

CULVERT WIDENING OR OTHER ISOLATED WORK WITHIN THE PROJECT LIMITS

1. Where positive redirection capability is provided, Item 2. may be omitted.
2. Plastic construction fencing may be used with drums for safety as required in the plans.
3. Vertical Panels on flexible support may be substituted for drums when the shoulder width is less than 4 feet.
4. When the shoulder width is greater than 12 feet, steady-burn lights may be omitted if drums are used.
5. Drums must extend the length of the culvert widening.

LEGEND

	Plastic drum
	Plastic drum with steady burn light or yellow warning reflector
	Steady burn warning light or yellow warning reflector

SHEET 10 OF 12



BARRICADE AND CONSTRUCTION CHANNELIZING DEVICES

BC(10)-21

FILE: bc-21.dgn	DN: TxDOT	CK: TxDOT	DW: TxDOT	CK: TxDOT
© TxDOT November 2002	CONT	SECT	JOB	HIGHWAY
REVISIONS				
9-07 8-14				
7-13 5-21				
	DIST	COUNTY		

DISCLAIMER: The use of this standard is governed by the "Texas Engineering Practice Act". No warranty of any kind is made by TxDOT for any purpose whatsoever. TxDOT assumes no responsibility for the conversion of this standard to other formats or for incorrect results or damages resulting from its use.

DATE:  
FILE:

## WORK ZONE PAVEMENT MARKINGS

### GENERAL

1. The Contractor shall be responsible for maintaining work zone and existing pavement markings, in accordance with the standard specifications and special provisions, on all roadways open to traffic within the CSJ limits unless otherwise stated in the plans.
2. Color, patterns and dimensions shall be in conformance with the "Texas Manual on Uniform Traffic Control Devices" (TMUTCD).
3. Additional supplemental pavement marking details may be found in the plans or specifications.
4. Pavement markings shall be installed in accordance with the TMUTCD and as shown on the plans.
5. When short term markings are required on the plans, short term markings shall conform with the TMUTCD, the plans and details as shown on the Standard Plan Sheet WZ(STPM).
6. When standard pavement markings are not in place and the roadway is opened to traffic, DO NOT PASS signs shall be erected to mark the beginning of the sections where passing is prohibited and PASS WITH CARE signs at the beginning of sections where passing is permitted.
7. All work zone pavement markings shall be installed in accordance with Item 662, "Work Zone Pavement Markings."

### RAISED PAVEMENT MARKERS

1. Raised pavement markers are to be placed according to the patterns on BC(12).
2. All raised pavement markers used for work zone markings shall meet the requirements of Item 672, "RAISED PAVEMENT MARKERS" and Departmental Material Specification DMS-4200 or DMS-4300.

### PREFABRICATED PAVEMENT MARKINGS

1. Removable prefabricated pavement markings shall meet the requirements of DMS-8241.
2. Non-removable prefabricated pavement markings (foil back) shall meet the requirements of DMS-8240.

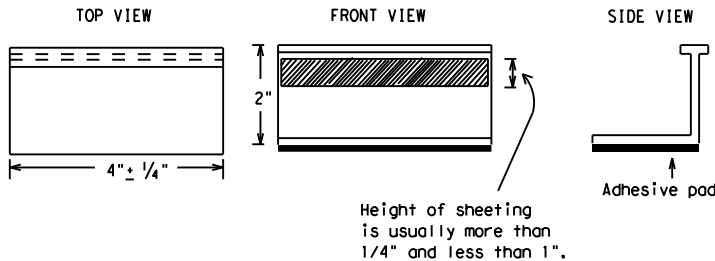
### MAINTAINING WORK ZONE PAVEMENT MARKINGS

1. The Contractor will be responsible for maintaining work zone pavement markings within the work limits.
2. Work zone pavement markings shall be inspected in accordance with the frequency and reporting requirements of work zone traffic control device inspections as required by Form 599.
3. The markings should provide a visible reference for a minimum distance of 300 feet during normal daylight hours and 160 feet when illuminated by automobile low-beam headlights at night, unless sight distance is restricted by roadway geometrics.
4. Markings failing to meet this criteria within the first 30 days after placement shall be replaced at the expense of the Contractor as per Specification Item 662.

### REMOVAL OF PAVEMENT MARKINGS

1. Pavement markings that are no longer applicable, could create confusion or direct a motorist toward or into the closed portion of the roadway shall be removed or obliterated before the roadway is opened to traffic.
2. The above shall not apply to detours in place for less than three days, where flaggers and/or sufficient channelizing devices are used in lieu of markings to outline the detour route.
3. Pavement markings shall be removed to the fullest extent possible, so as not to leave a discernable marking. This shall be by any method approved by TxDOT Specification Item 677 for "Eliminating Existing Pavement Markings and Markers".
4. The removal of pavement markings may require resurfacing or seal coating portions of the roadway as described in Item 677.
5. Subject to the approval of the Engineer, any method that proves to be successful on a particular type pavement may be used.
6. Blast cleaning may be used but will not be required unless specifically shown in the plans.
7. Over-painting of the markings SHALL NOT BE permitted.
8. Removal of raised pavement markers shall be as directed by the Engineer.
9. Removal of existing pavement markings and markers will be paid for directly in accordance with Item 677, "ELIMINATING EXISTING PAVEMENT MARKINGS AND MARKERS," unless otherwise stated in the plans.
10. Black-out marking tape may be used to cover conflicting existing markings for periods less than two weeks when approved by the Engineer.

## Temporary Flexible-Reflective Roadway Marker Tabs



**STAPLES OR NAILS SHALL NOT BE USED TO SECURE  
TEMPORARY FLEXIBLE-REFLECTIVE ROADWAY MARKER  
TABS TO THE PAVEMENT SURFACE**

1. Temporary flexible-reflective roadway marker tabs used as guidemarks shall meet the requirements of DMS-8242.
2. Tabs detailed on this sheet are to be inspected and accepted by the Engineer or designated representative. Sampling and testing is not normally required, however at the option of the Engineer, either "A" or "B" below may be imposed to assure quality before placement on the roadway.
  - A. Select five (5) or more tabs at random from each lot or shipment and submit to the Construction Division, Materials and Pavement Section to determine specification compliance.
  - B. Select five (5) tabs and perform the following test. Affix five (5) tabs at 24 inch intervals on an asphaltic pavement in a straight line. Using a medium size passenger vehicle or pickup, run over the markers with the front and rear tires at a speed of 35 to 40 miles per hour, four (4) times in each direction. No more than one (1) out of the five (5) reflective surfaces shall be lost or displaced as a result of this test.
3. Small design variances may be noted between tab manufacturers.
4. See Standard Sheet WZ(STPM) for tab placement on new pavements. See Standard Sheet TCP(7-1) for tab placement on seal coat work.

### RAISED PAVEMENT MARKERS USED AS GUIDEMARKS

1. Raised pavement markers used as guidemarks shall be from the approved product list, and meet the requirements of DMS-4200.
2. All temporary construction raised pavement markers provided on a project shall be of the same manufacturer.
3. Adhesive for guidemarks shall be bituminous material hot applied or butyl rubber pad for all surfaces, or thermoplastic for concrete surfaces.

Guidemarks shall be designated as:  
YELLOW - (two amber reflective surfaces with yellow body).  
WHITE - (one silver reflective surface with white body).

DEPARTMENTAL MATERIAL SPECIFICATION	Item 2.
PAVEMENT MARKERS (REFLECTORIZED)	DMS-4200
TRAFFIC BUTTONS	DMS-4300
EPOXY AND ADHESIVES	DMS-6100
BITUMINOUS ADHESIVE FOR PAVEMENT MARKERS	DMS-6130
PERMANENT PREFABRICATED PAVEMENT MARKINGS	DMS-8240
TEMPORARY REMOVABLE, PREFABRICATED PAVEMENT MARKINGS	DMS-8241
TEMPORARY FLEXIBLE, REFLECTIVE ROADWAY MARKER TABS	DMS-8242

A list of prequalified reflective raised pavement markers, non-reflective traffic buttons, roadway marker tabs and other pavement markings can be found at the Material Producer List web address shown on BC(1).

SHEET 11 OF 12



Texas Department of Transportation

Traffic  
Safety  
Division  
Standard

## BARRICADE AND CONSTRUCTION PAVEMENT MARKINGS

BC(11)-21

FILE: bc-21.dgn	DN: TxDOT	CK: TxDOT	DW: TxDOT	CK: TxDOT
© TxDOT February 1998	CONT	SECT	JOB	HIGHWAY
REVISIONS				
2-98 9-07 5-21				
1-02 7-13				
11-02 8-14				
	DIST		COUNTY	

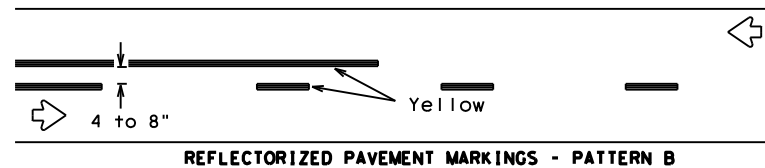
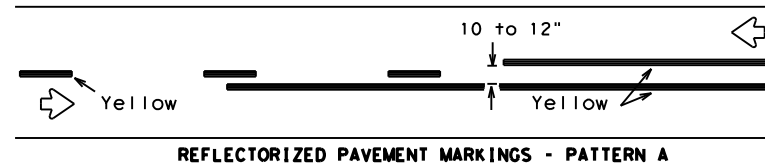
26

105

DISCLAIMER: The use of this standard is governed by the "Texas Engineering Practice Act". No warranty of any kind is made by TxDOT for any purpose whatsoever. TxDOT assumes no responsibility for the conversion of this standard to other formats or for incorrect results or damages resulting from its use.

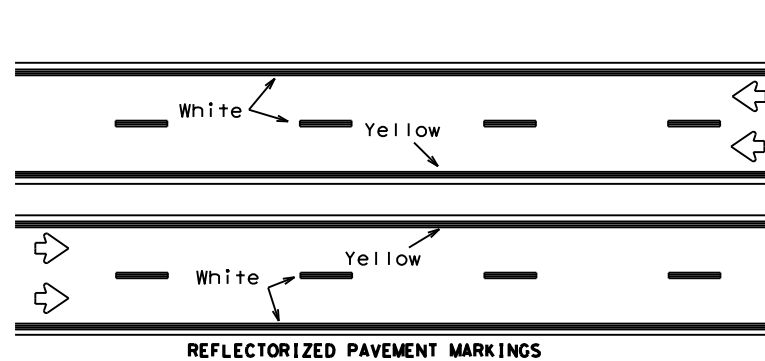
DATE:  
FILE:

## PAVEMENT MARKING PATTERNS



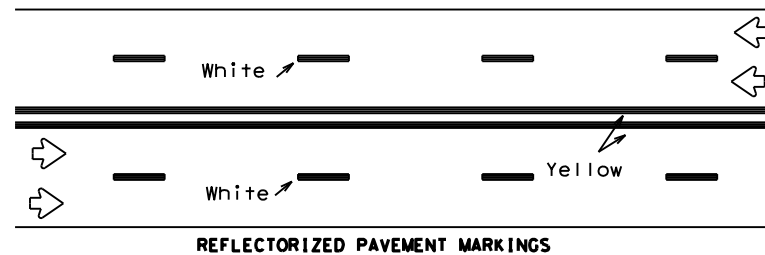
Pattern A is the TxDOT Standard, however Pattern B may be used if approved by the Engineer. Prefabricated markings may be substituted for reflectORIZED pavement markings.

## CENTER LINE & NO-PASSING ZONE BARRIER LINES FOR TWO-LANE, TWO-WAY HIGHWAYS



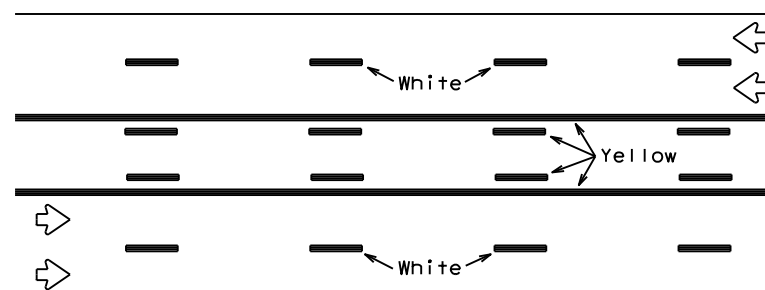
Prefabricated markings may be substituted for reflectORIZED pavement markings.

## EDGE & LANE LINES FOR DIVIDED HIGHWAY



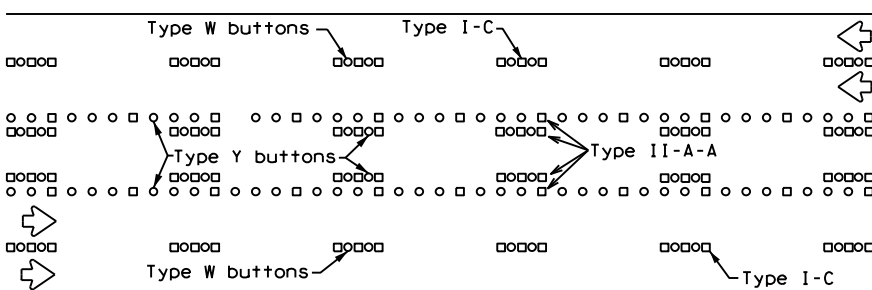
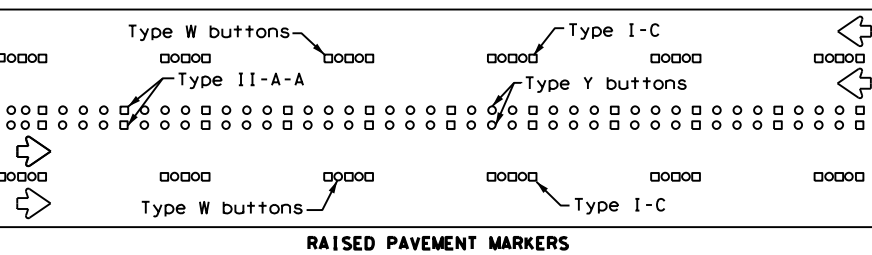
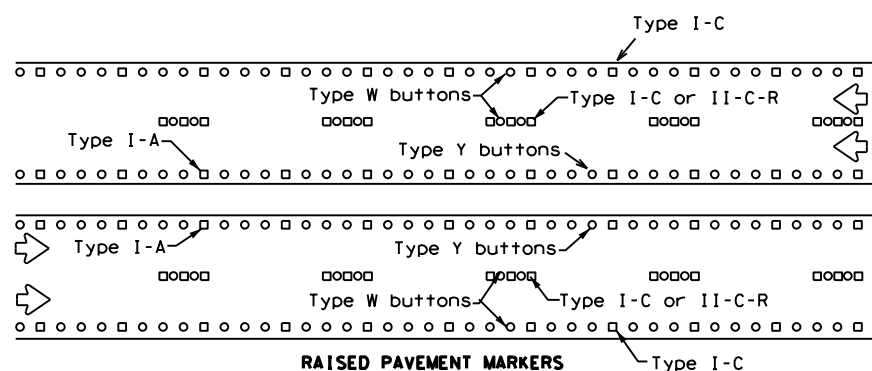
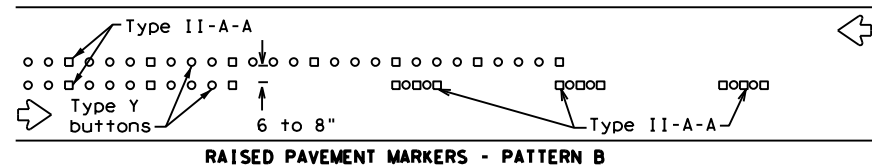
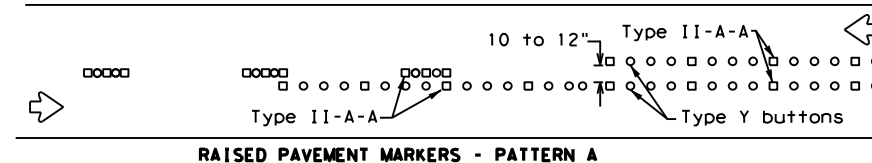
Prefabricated markings may be substituted for reflectORIZED pavement markings.

## LANE & CENTER LINES FOR MULTILANE UNDIVIDED HIGHWAYS



Prefabricated markings may be substituted for reflectORIZED pavement markings.

## TWO-WAY LEFT TURN LANE

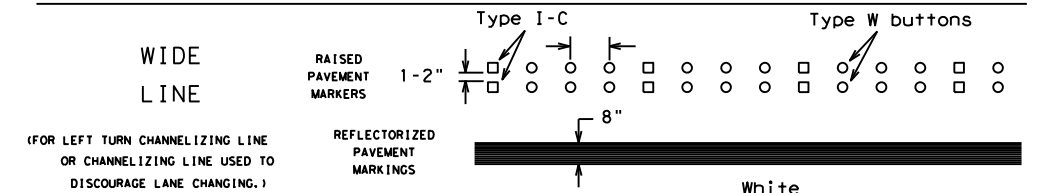
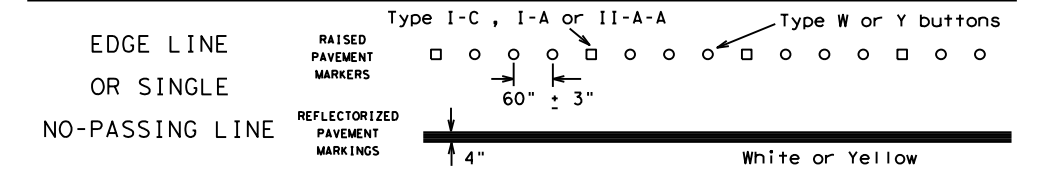
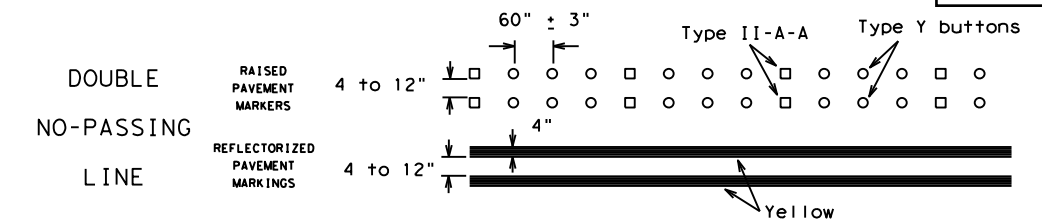


RAISED PAVEMENT MARKERS

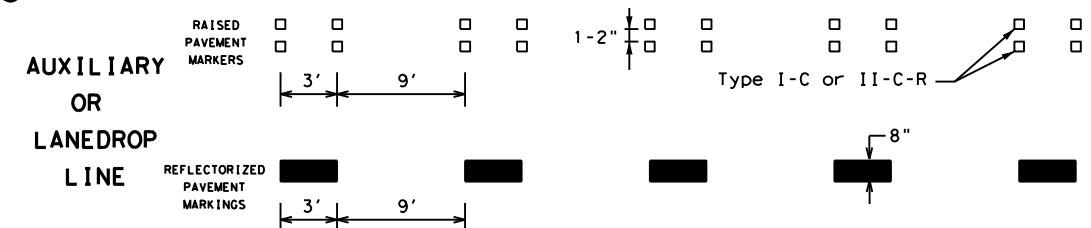
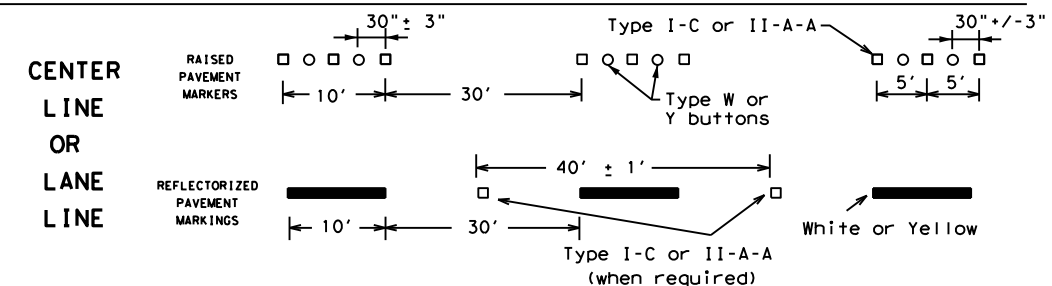
## STANDARD WORK ZONE PAVEMENT MARKINGS DETAILS

Item 2.

## SOLID LINES

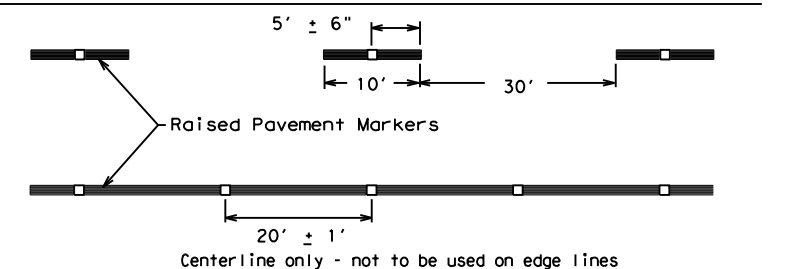


## BROKEN LINES



## REMOVABLE MARKINGS WITH RAISED PAVEMENT MARKERS

If raised pavement markers are used to supplement REMOVABLE markings, the markers shall be applied to the top of the tape at the approximate mid length of tape used for broken lines or at 20 foot spacing for solid lines. This allows an easier removal of raised pavement markers and tape.



SHEET 12 OF 12



## BARRICADE AND CONSTRUCTION PAVEMENT MARKING PATTERNS

BC(12)-21

FILE: bc-21.dgn	DN: TxDOT	CK: TxDOT	DW: TxDOT	CK: TxDOT
©TxDOT February 1998	CONT	SECT	JOB	HIGHWAY
REVISIONS				
1-97 9-07 5-21				
2-98 7-13				
11-02 8-14				
	DIST	COUNTY		

27

## *DIVISION 4. FOUNDERS DAY COMMISSION*

### **Sec. 2.04.091. Creation.**

There is hereby created the City of Dripping Springs Founders Day Commission.

### **Sec. 2.04.094. Organization and meetings.**

- (a) The commission shall meet for organization immediately after appointment of its members and shall adopt such rules as it deems best to govern its actions subject to the general laws of this state, this division and other city ordinances.
- (b) A quorum shall consist of a simple majority of the members, including the chairperson. The chairperson shall have a vote only in the case of a tie vote by the commission members.
- (c) ~~The meetings of the commission shall be held on a regular basis, but not less than once a month. Regardless of this requirement, the commission may vote to cancel or reschedule any meeting at an open meeting if deemed appropriate by the commission. Such meetings shall be open to the public as required by the laws of the state and comply with the Open Meetings Act as set forth in chapter 551 of the Texas Government Code, as amended.~~

**Meetings of the commission shall be held as follows:**

- (1) January – May: Second and Fourth Monday of each month; and**
- (2) October – December: Second Monday of each month.**
- (d) Meetings may also be called by the chairperson, at the request of two or more of the commission's members, or at the request of the council.
- (e) Commission members unable to attend any meeting shall notify the chairperson as soon as possible, in order to assure a quorum will be present. Any member of the commission absent for three regular consecutive meetings or four regular meetings during the preceding twelve-month period of the commission, without having obtained leave of absence at a regular meeting, unless prevented by sickness, shall be deemed to have vacated his or her office.
- (f) Meetings shall be open to the public as required by the laws of the state and comply with the Open Meetings Act as set forth in chapter 551 of the Texas Government Code, as amended. The commission may vote to cancel or reschedule any meeting at an open meeting if deemed appropriate by the commission.**



**STAFF REPORT**  
**City of Dripping Springs**  
**PO Box 384**  
**511 Mercer Street**  
**Dripping Springs, TX 78620**

**Submitted By:** Andrea Cunningham, City Secretary

**Commission Meeting Date:** October 23, 2023

**Agenda Item Wording:** Discuss and consider approval of the 2024 Founders Day Commission meeting calendar.

**Agenda Item Requestor:** Johnna Krantz, Community Events Coordinator

**Summary/Background:** Each year the City Secretary prepares the next year's meeting calendar for approval by the Founders Day Commission. Meeting dates are scheduled using the frequency as stated in the Board's ordinance. This Commission will be changing their meeting ordinance and moving forward will be meeting the 2<sup>nd</sup> and 4<sup>th</sup> Monday of each month January – May, and the 2<sup>nd</sup> Monday of each month October – December.

Attached for review is the proposed 2024 meeting calendar with approved city holidays. The meeting conflicts are listed below with staff recommendations; however, the Commission may schedule these to any preferred date. Meetings can also be rescheduled throughout the year as the Board sees fit.

- 2<sup>nd</sup> Monday, February 19<sup>th</sup>, Presidents' Day
  - Reschedule to 4<sup>th</sup> Monday, February 26<sup>th</sup>
- 2<sup>nd</sup> Monday, April 8<sup>th</sup>, Eclipse Day
  - Reschedule to April 15<sup>th</sup>, 3<sup>rd</sup> Monday
- 4<sup>th</sup> Monday, May 27<sup>th</sup>, Memorial Day
  - If budget is completed, you can cancel this meeting; or
  - Reschedule to 3<sup>rd</sup> Monday, May 20<sup>th</sup>
- 2<sup>nd</sup> Monday, October 14<sup>th</sup>, Columbus Day
  - Reschedule to 3<sup>rd</sup> Monday, October 21<sup>st</sup>
- 2<sup>nd</sup> Monday, November 11<sup>th</sup>, Veterans Day
  - Reschedule to 3<sup>rd</sup> Monday, November 18<sup>th</sup>

**Committee Recommendations:** Staff recommends approval of the calendar as presented, with the motion addressing the May meeting. Should there be any changes to the recommended meeting dates, please provide for those changes in a motion.

**Attachments:**

1. DSRP 2024 Proposed Calendar

**Next Steps/Schedule:**

1. Update calendar if any changes
2. Add meetings to calendars:
  - a. City Council and Administrative Staff
  - b. Staff calendar invite
  - c. City website main calendar
  - d. Municode Agenda (automatically populates Agendas and Minutes webpage with upcoming meetings)
3. Provide final calendar to City Council and Staff

2024

## Founders Day Commission

Use spinner to change the calendar year

## JANUARY

SUN	MON	TUE	WED	THU	FRI	SAT
	1	2	3	4	5	6
7	8	9	10	11	12	13
14	15	16	17	18	19	20
21	22	23	24	25	26	27
28	29	30	31			

## FEBRUARY

SUN	MON	TUE	WED	THU	FRI	SAT
				1	2	3
4	5	6	7	8	9	10
11	12	13	14	15	16	17
18	19	20	21	22	23	24
25	26	27	28	29		

## MARCH

SUN	MON	TUE	WED	THU	FRI	SAT
					1	2
3	4	5	6	7	8	9
10	11	12	13	14	15	16
17	18	19	20	21	22	23
24	25	26	27	28	29	30
31						

## APRIL

SUN	MON	TUE	WED	THU	FRI	SAT
	1	2	3	4	5	6
7	8	9	10	11	12	13
14	15	16	17	18	19	20
21	22	23	24	25	26	27
28	29	30				

## MAY

SUN	MON	TUE	WED	THU	FRI	SAT
			1	2	3	4
5	6	7	8	9	10	11
12	13	14	15	16	17	18
19	20	21	22	23	24	25
26	27	28	29	30	31	

## JUNE

SUN	MON	TUE	WED	THU	FRI	SAT
						1
2	3	4	5	6	7	8
9	10	11	12	13	14	15
16	17	18	19	20	21	22
23	24	25	26	27	28	29
30						

## JULY

SUN	MON	TUE	WED	THU	FRI	SAT
	1	2	3	4	5	6
7	8	9	10	11	12	13
14	15	16	17	18	19	20
21	22	23	24	25	26	27
28	29	30	31			

## AUGUST

SUN	MON	TUE	WED	THU	FRI	SAT
				1	2	3
4	5	6	7	8	9	10
11	12	13	14	15	16	17
18	19	20	21	22	23	24
25	26	27	28	29	30	31

## SEPTEMBER

SUN	MON	TUE	WED	THU	FRI	SAT
1	2	3	4	5	6	7
8	9	10	11	12	13	14
15	16	17	18	19	20	21
22	23	24	25	26	27	28
29	30					

## OCTOBER

SUN	MON	TUE	WED	THU	FRI	SAT
		1	2	3	4	5
6	7	8	9	10	11	12
13	14	15	16	17	18	19
20	21	22	23	24	25	26
27	28	29	30	31		

## NOVEMBER

SUN	MON	TUE	WED	THU	FRI	SAT
					1	2
3	4	5	6	7	8	9
10	11	12	13	14	15	16
17	18	19	20	21	22	23
24	25	26	27	28	29	30

## DECEMBER

SUN	MON	TUE	WED	THU	FRI	SAT
1	2	3	4	5	6	7
8	9	10	11	12	13	14
15	16	17	18	19	20	21
22	23	24	25	26	27	28
29	30	31				

## CITY HOLIDAYS

## DSISD HOLIDAYS

## FDC Meetings

01/08/24	Regular Meeting
01/22/24	Regular Meeting
02/05/24	Regular Meeting
02/19/24	Reschedule Holiday Meeting
03/11/24	Regular Meeting
03/25/24	Regular Meeting
04/08/24	Reschedule Holiday Meeting
04/22/24	Regular Meeting
05/13/24	Regular Meeting
05/27/24	Reschedule Holiday Meeting
10/14/24	Reschedule Holiday Meeting
11/11/24	Reschedule Holiday Meeting
12/09/24	Regular Meeting

## FDC Meetings Recommendation

February	Monday, 2/26/24
April	Thursday, 4/15/24
May	CANCEL 5/27 MEETING
October	Monday, 10/21/24
November	Monday, 11/18/24